



VICTOR CENTRAL
SCHOOL DISTRICT

NYS Grades 3-8 Assessment Results

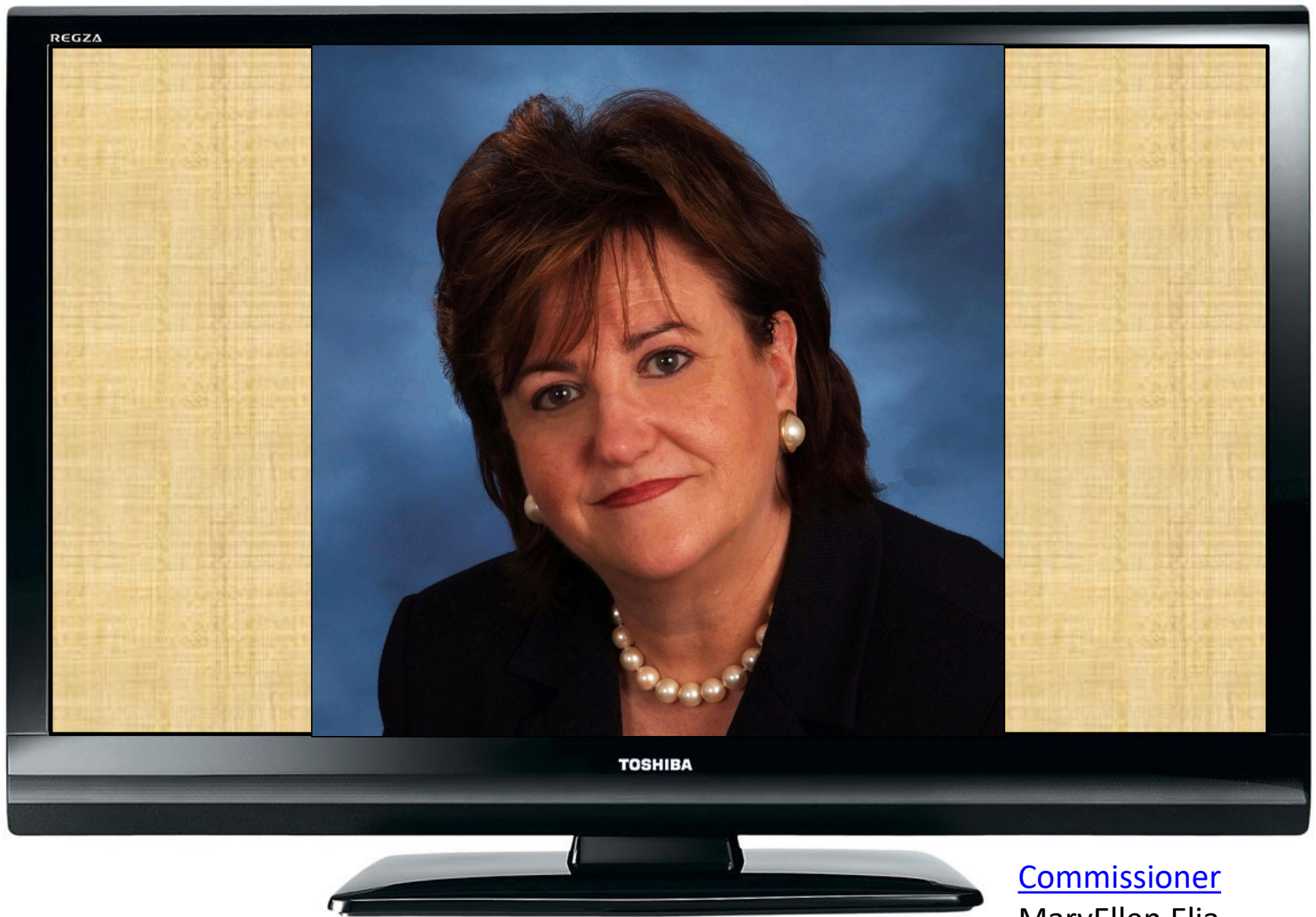
October 11, 2018



What do the scores mean?

- **Level 1** - Not meeting grade level learning standards;
- **Level 2** - Partially meeting grade level learning standards;
- **Level 3** - Meeting grade level learning standards;
- **Level 4** - Excelling in grade level learning standards



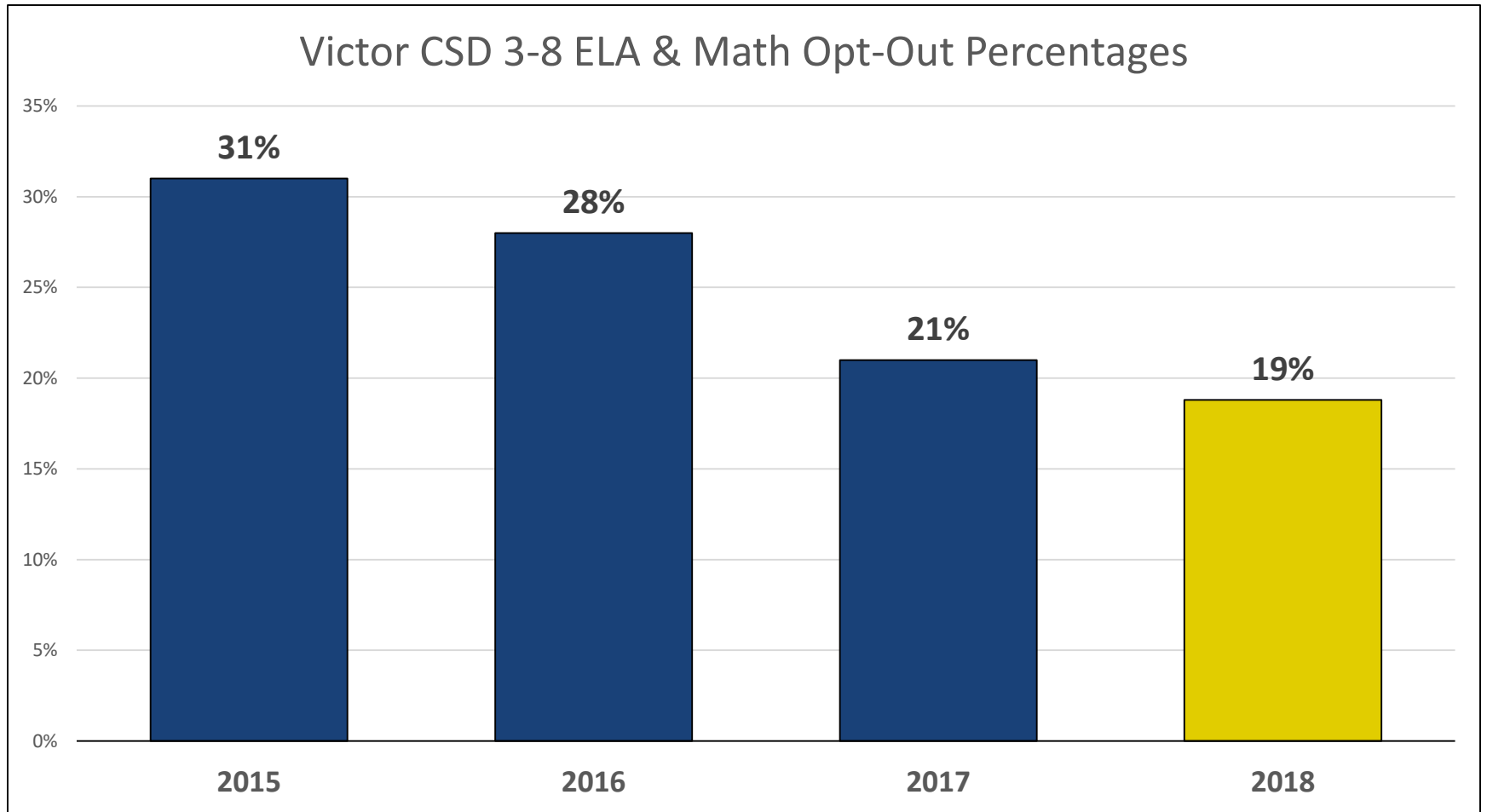


[Commissioner](#)

MaryEllen Elia

NYS Education Department

What about Opt-Outs?



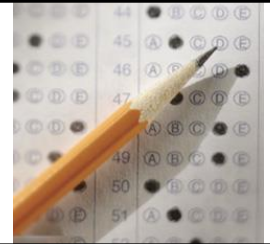
Computerized Assessments

- SED is committed to increasing the use of computerized testing, despite technical glitches with last spring's ELA tests.
- Future benefit is that the state will transition to "adaptive testing," which adjusts questions based on student performance to provide a more individual assessment.





New York State Testing Program



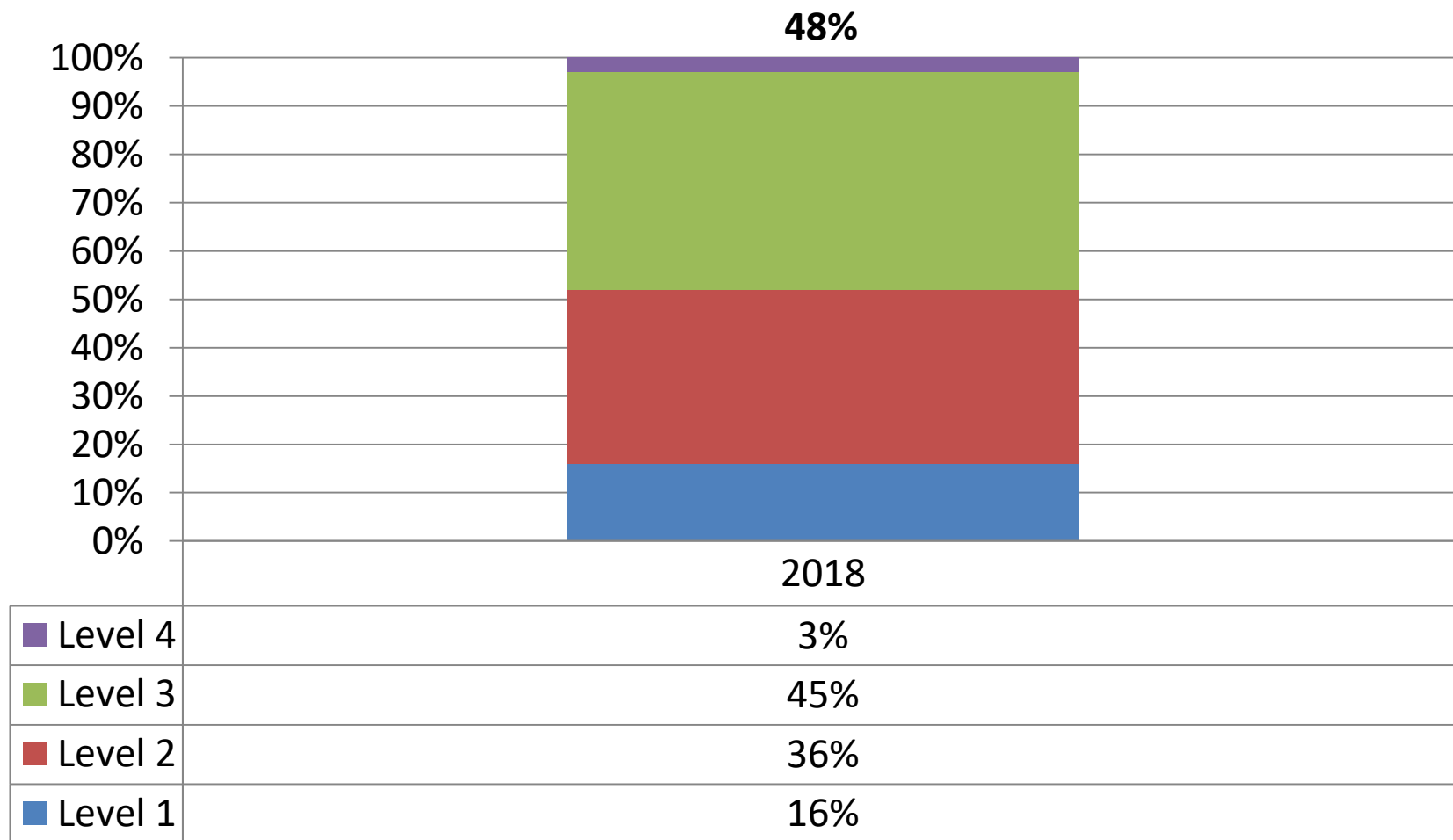
Grade 3 Results

April - May 2018



2018 NYS Grade 3 ELA

At or Above Level 3:



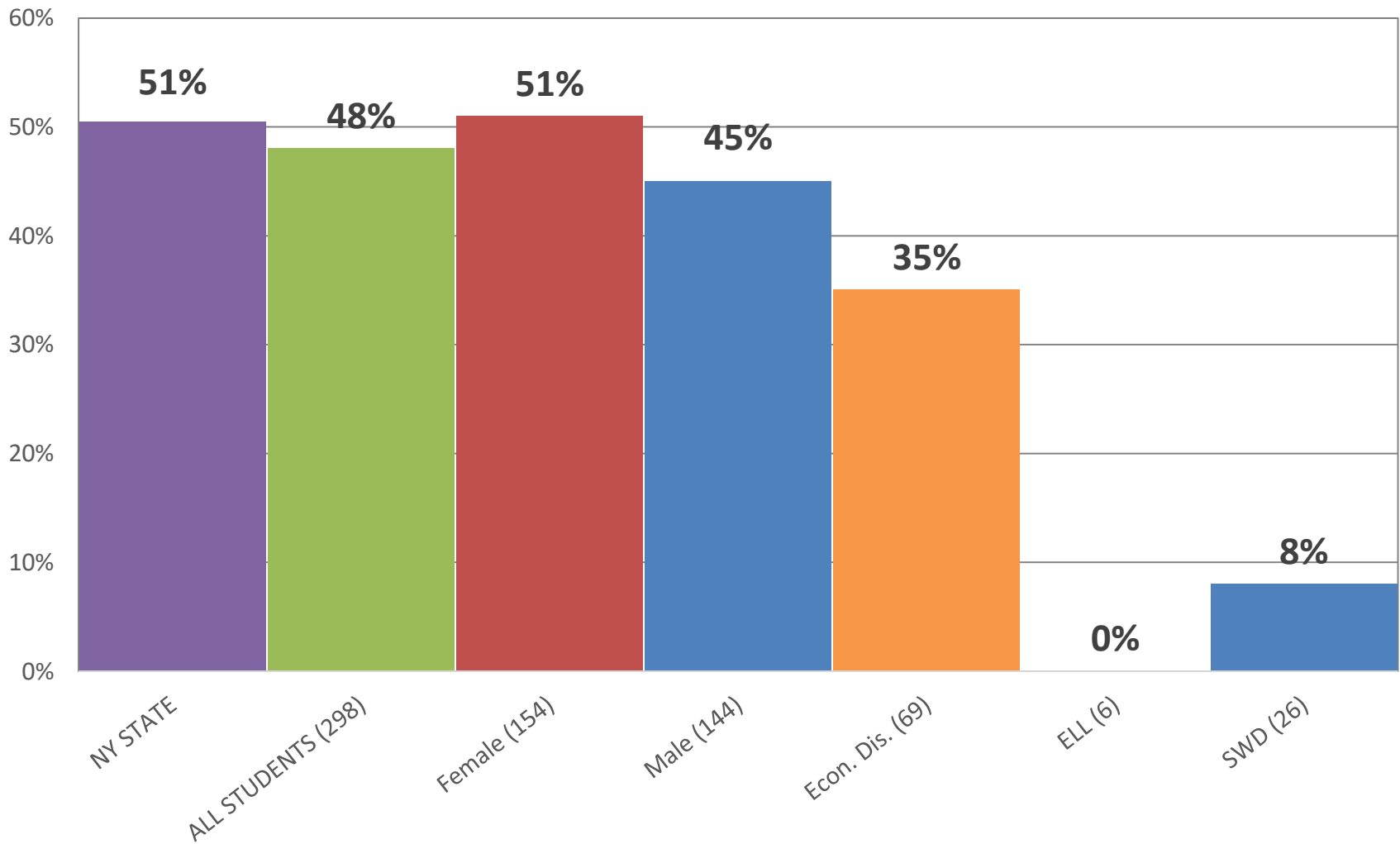
of Students Tested 298

% of Students Tested 90%

2018 NYS Grade 3 ELA

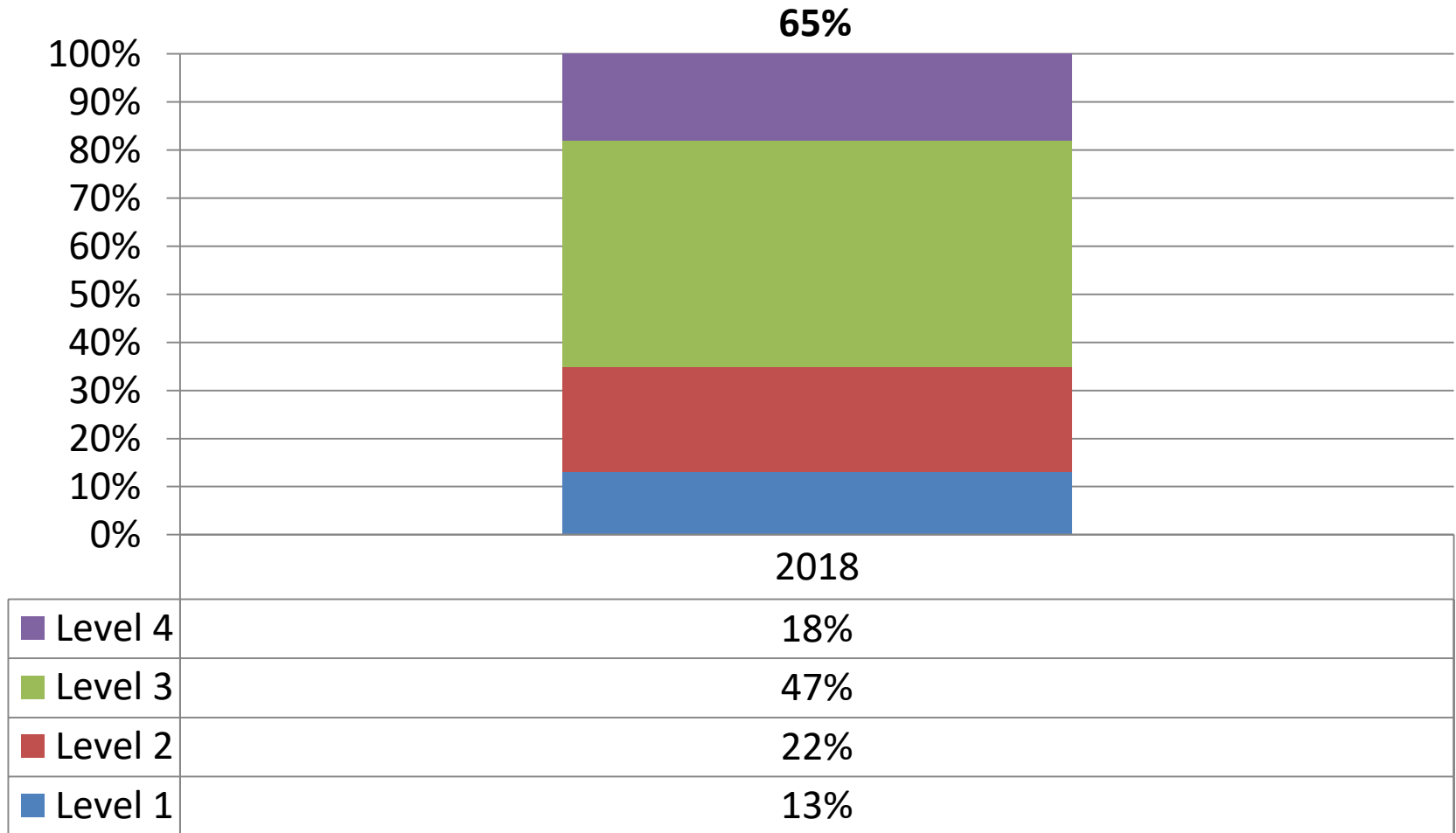
results by subgroup

At or Above Level 3:



2018 NYS Grade 3 Math

At or Above Level 3:



of Students Tested

300

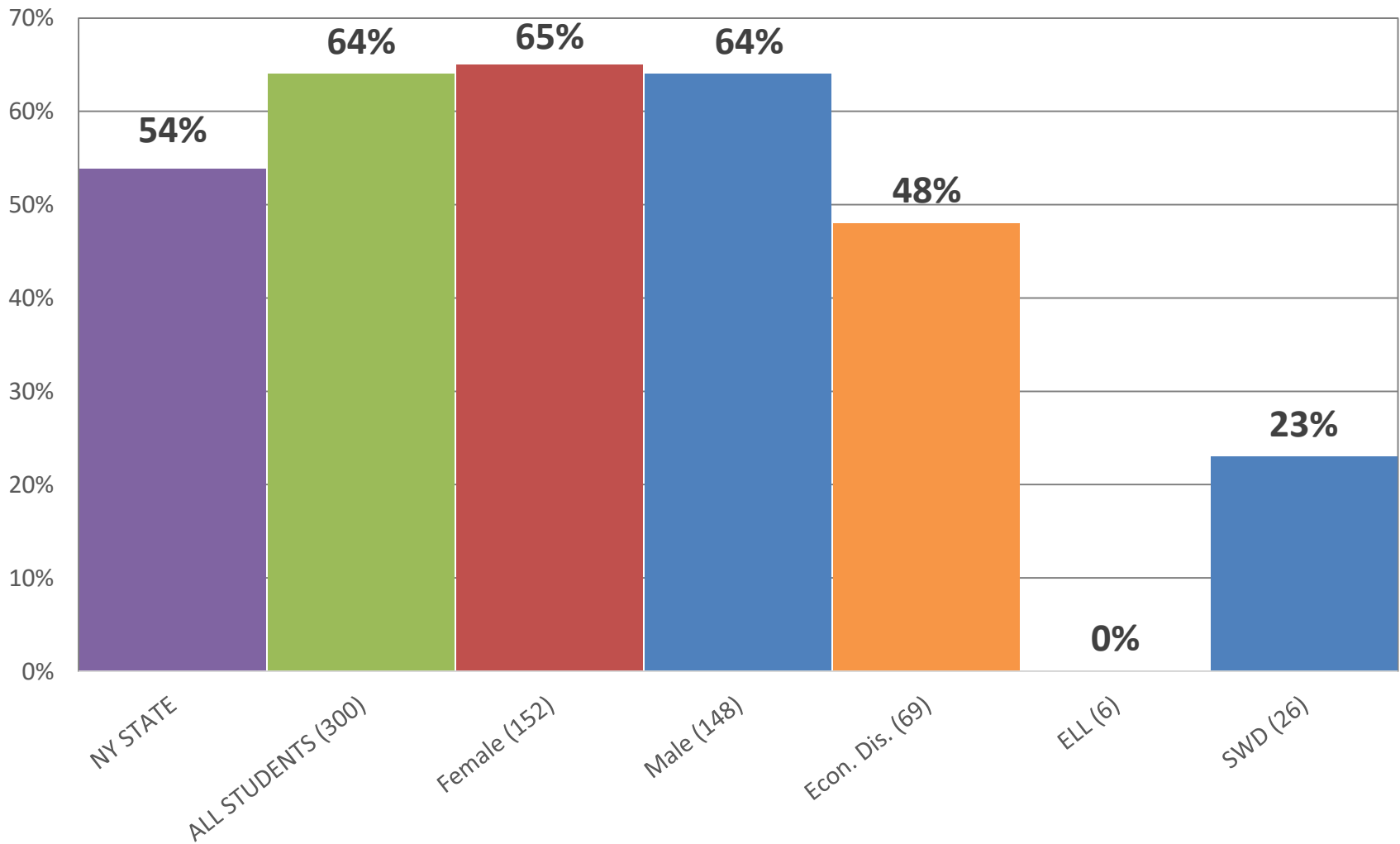
% of Students Tested

90%

2018 NYS Grade 3 Math

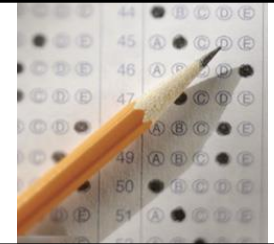
results by subgroup

At or Above Level 3:





New York State Testing Program



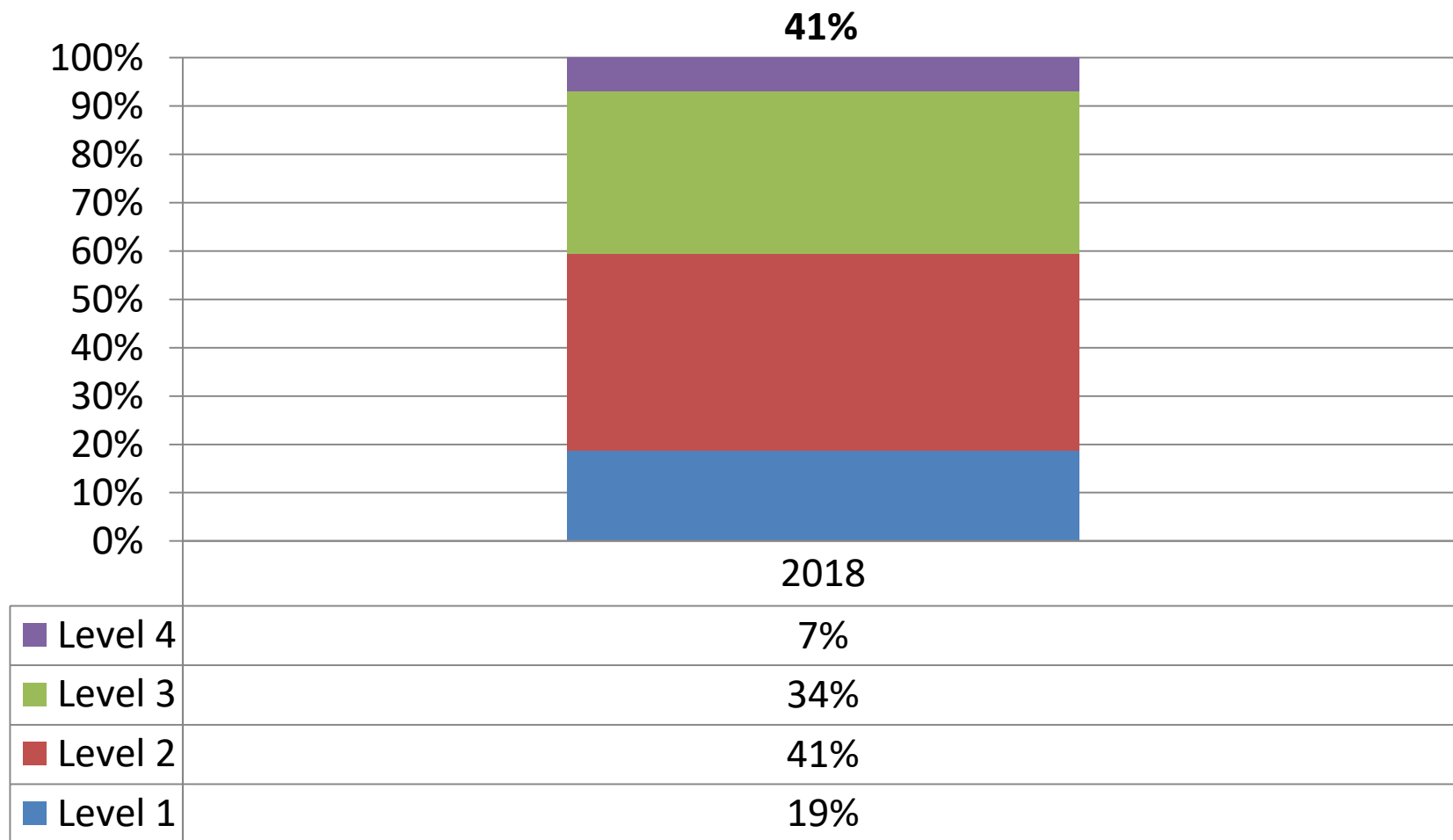
Grades 4-6 Results

April - May 2018



2018 NYS Grade 4 ELA

At or Above Level 3:



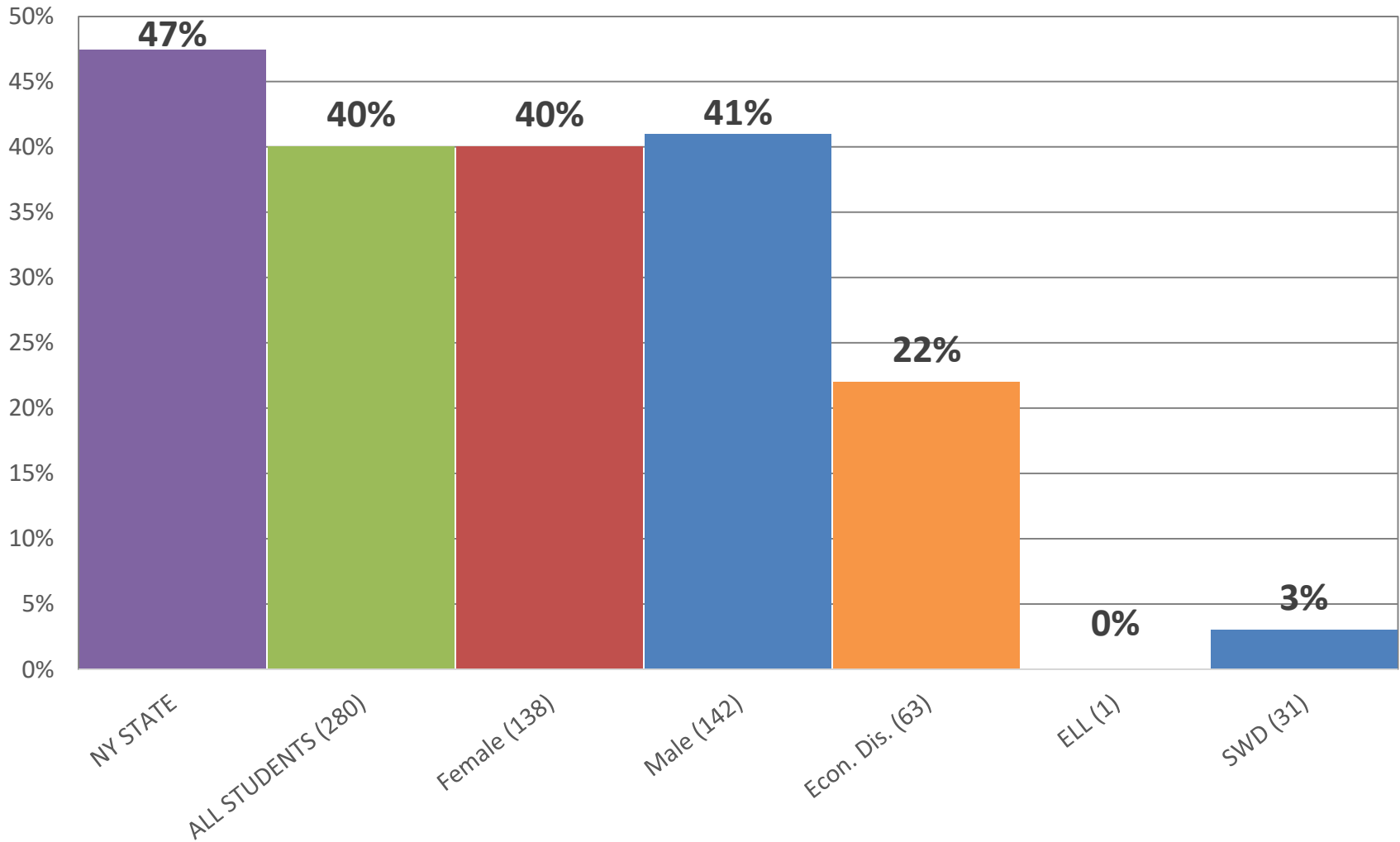
of Students Tested 280

% of Students Tested 86%

2018 NYS Grade 4 ELA

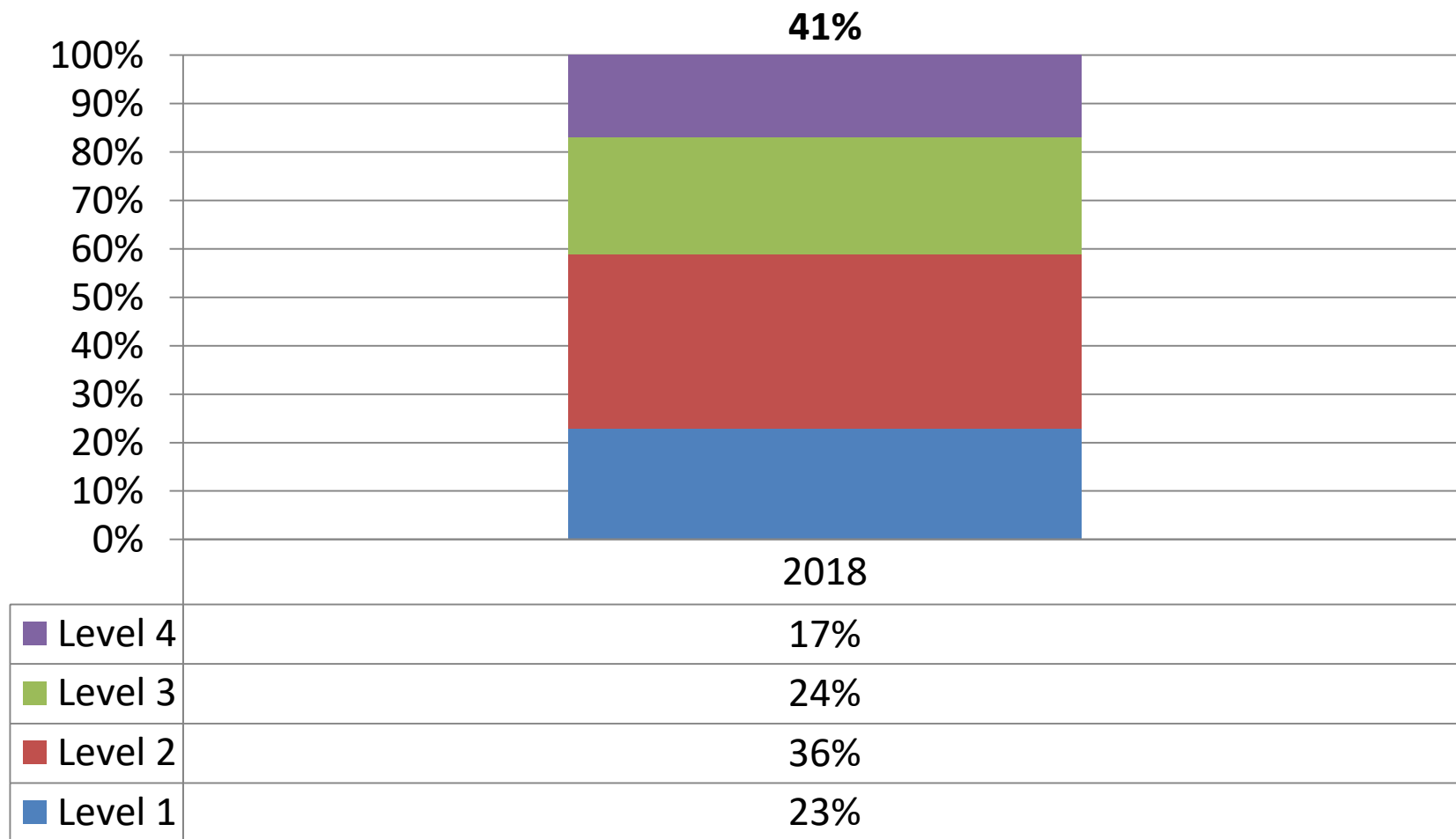
results by subgroup

At or Above Level 3:



2018 NYS Grade 5 ELA

At or Above Level 3:



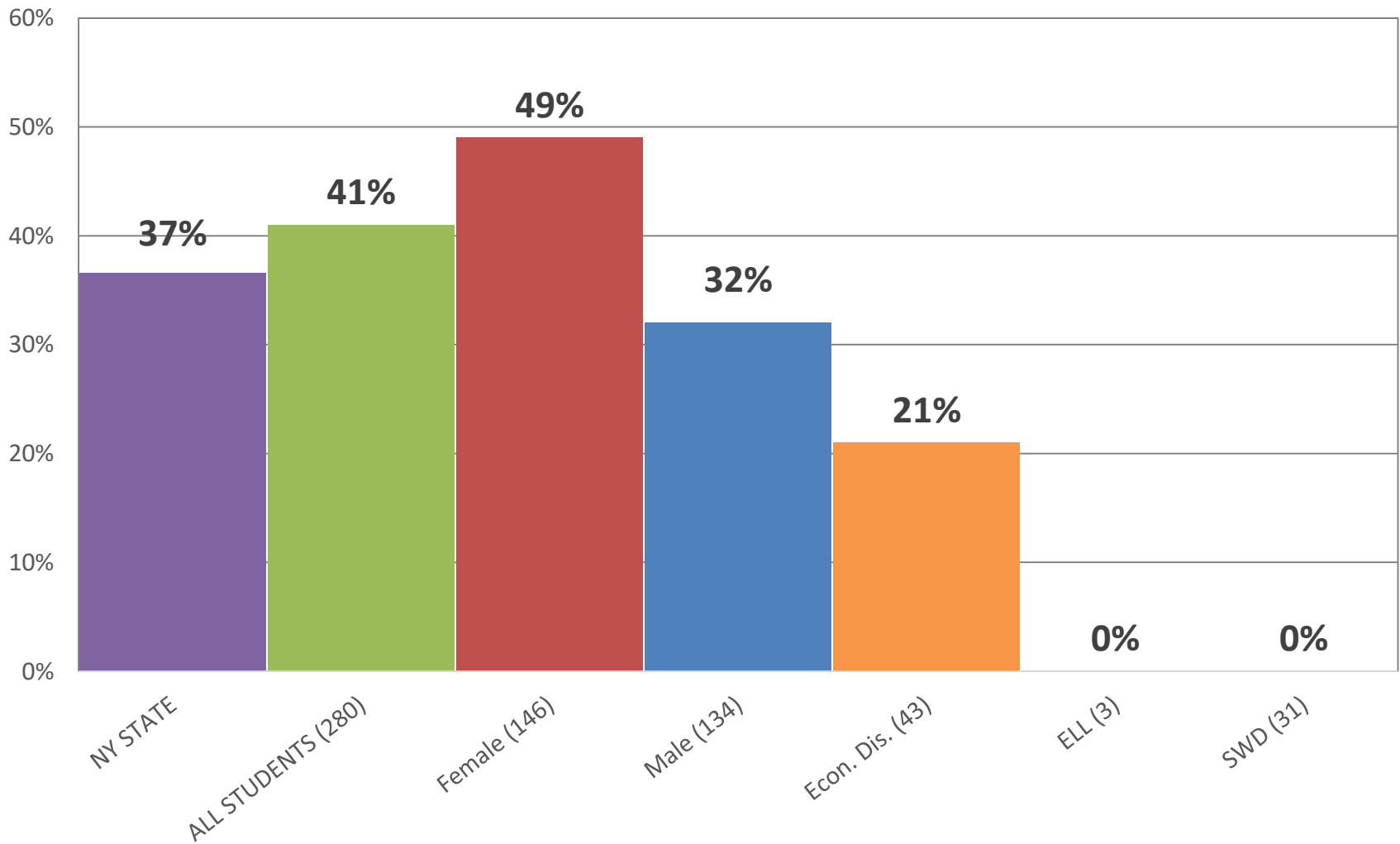
of Students Tested 280

% of Students Tested 86%

2018 NYS Grade 5 ELA

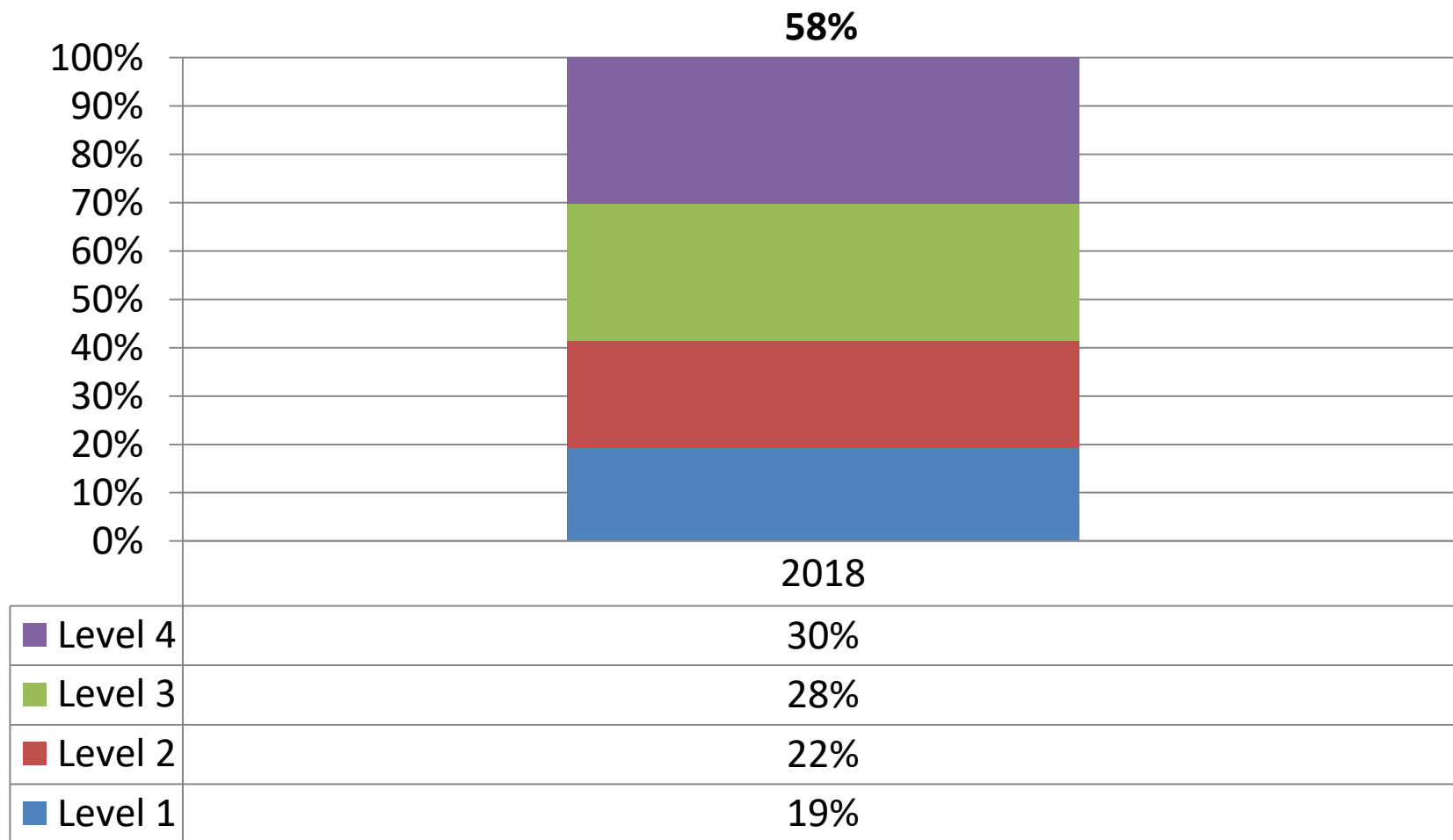
results by subgroup

At or Above Level 3:



2018 NYS Grade 6 ELA

At or Above Level 3:



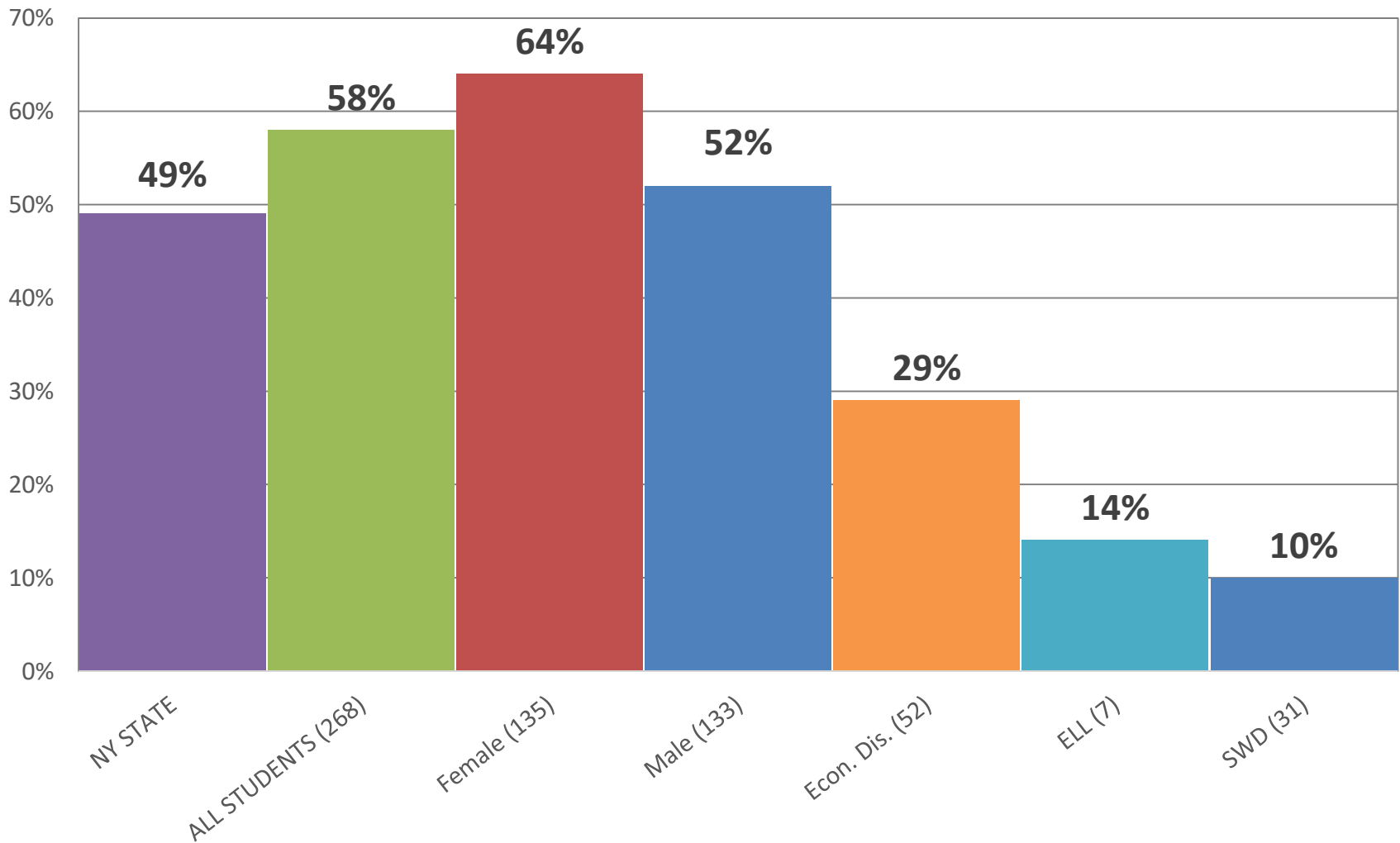
of Students Tested 268

% of Students Tested 80%

2018 NYS Grade 6 ELA

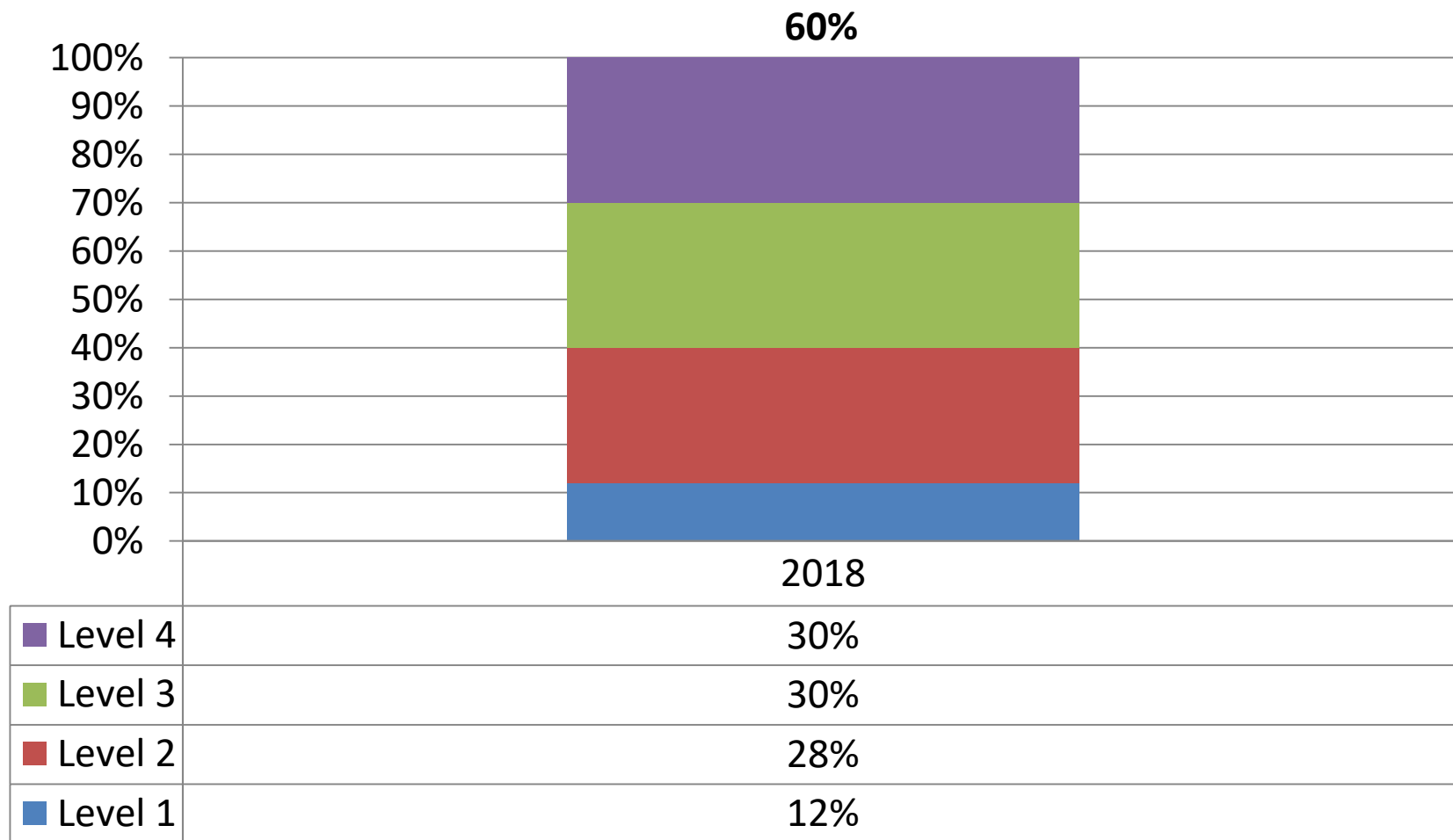
results by subgroup

At or Above Level 3:



2018 NYS Grade 4 Math

At or Above Level 3:



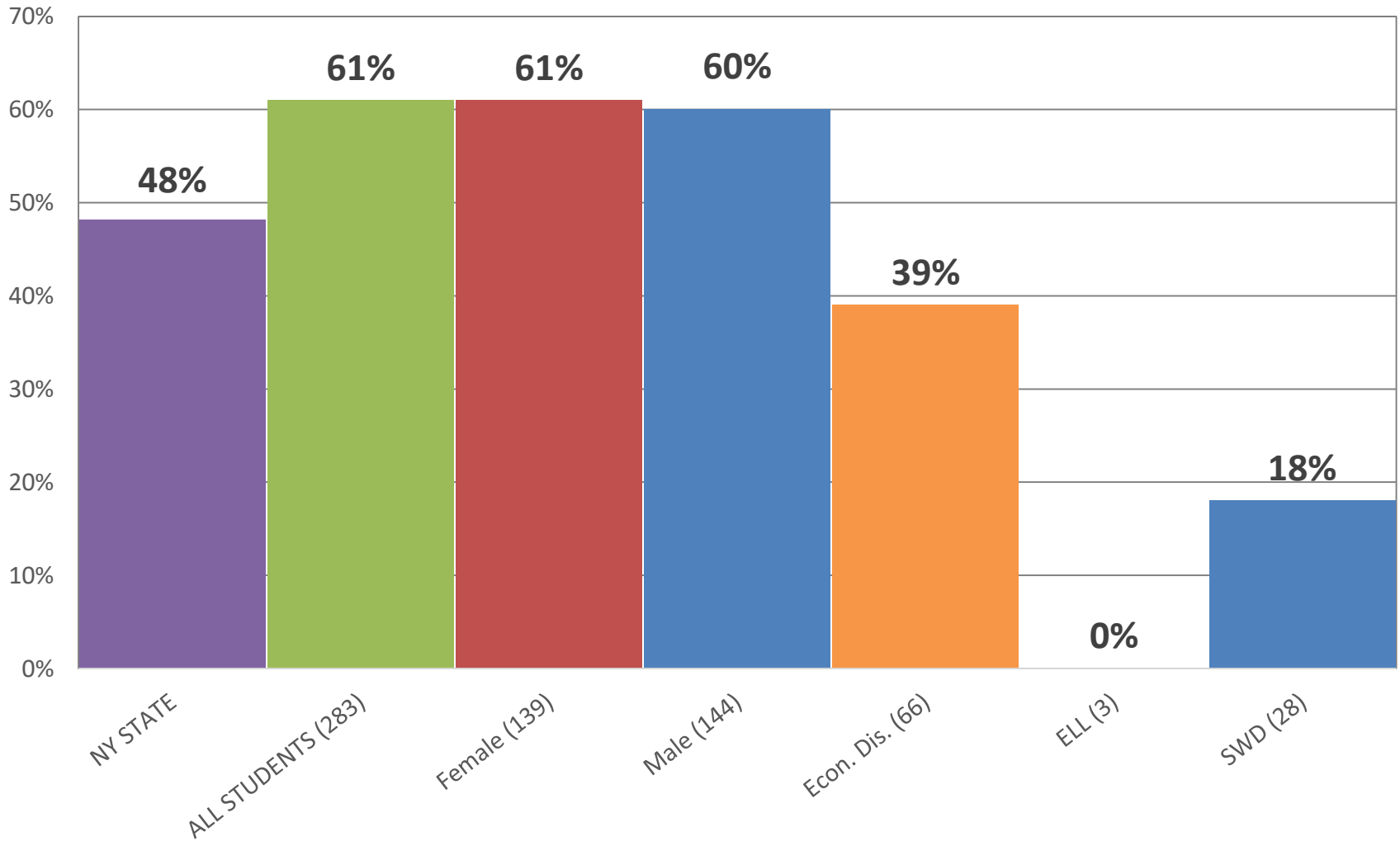
of Students Tested 283

% of Students Tested 87%

2018 NYS Grade 4 Math

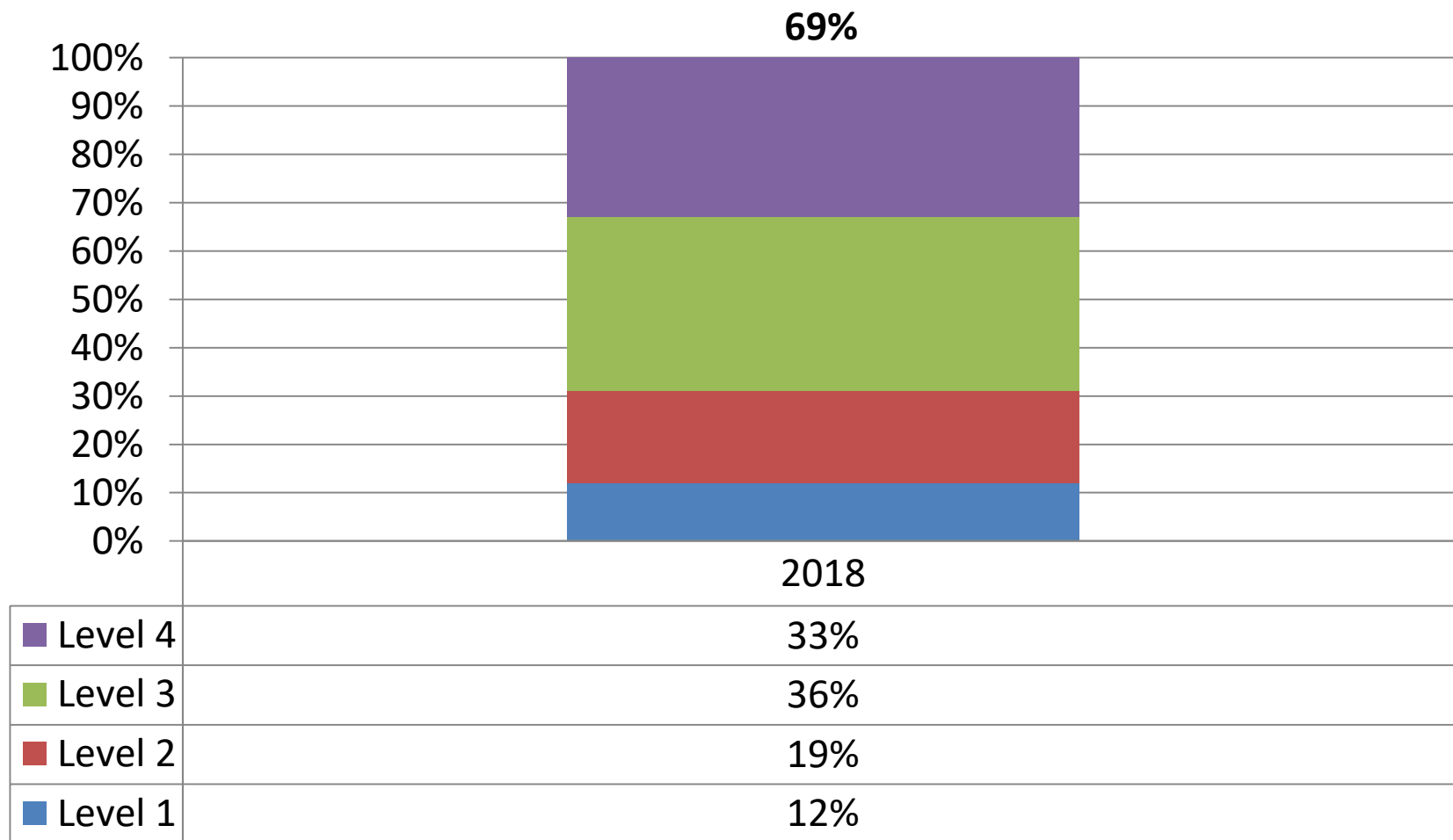
results by subgroup

At or Above Level 3:



2018 NYS Grade 5 Math

At or Above Level 3:



of Students Tested

282

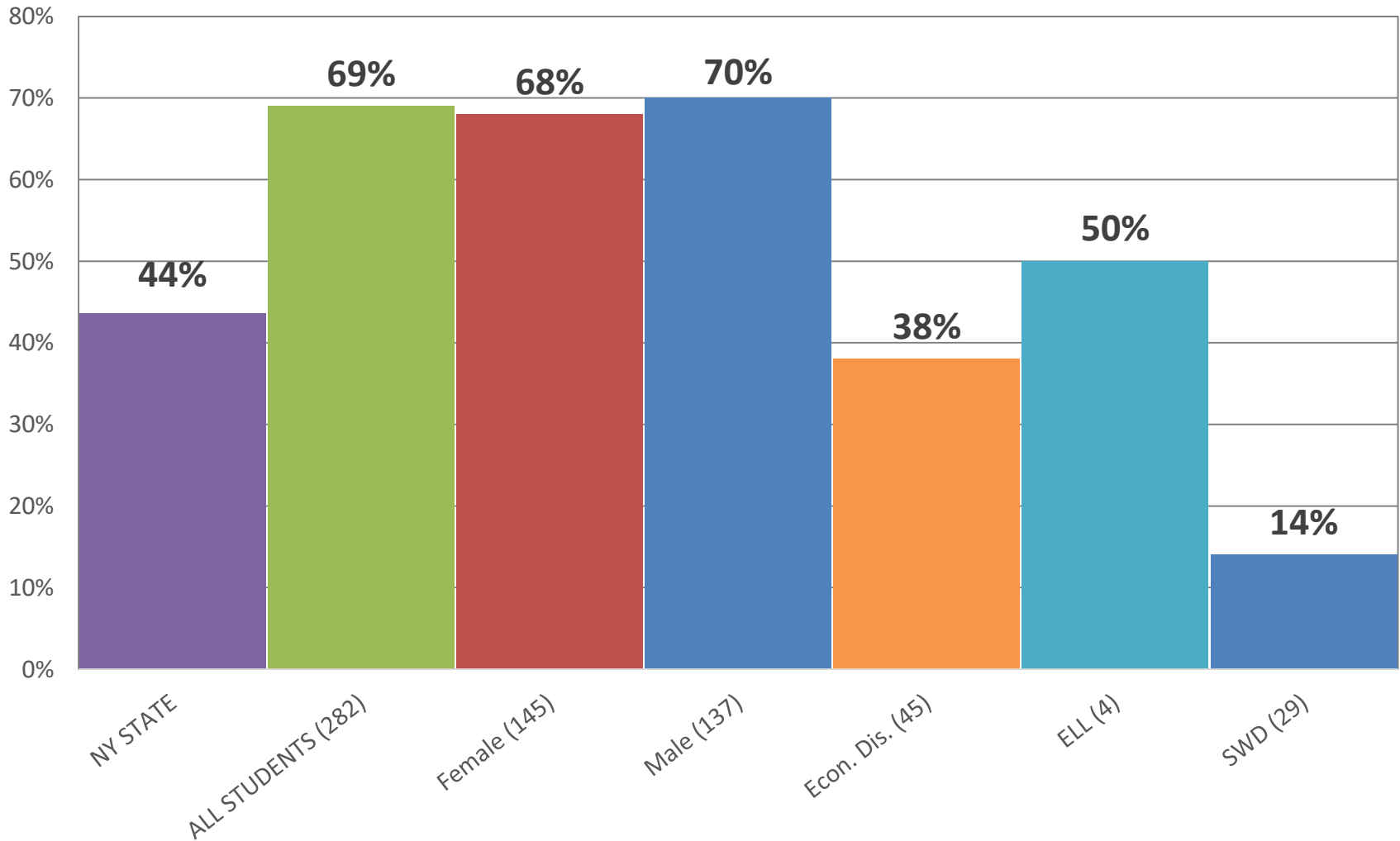
% of Students Tested

87%

2018 NYS Grade 5 Math

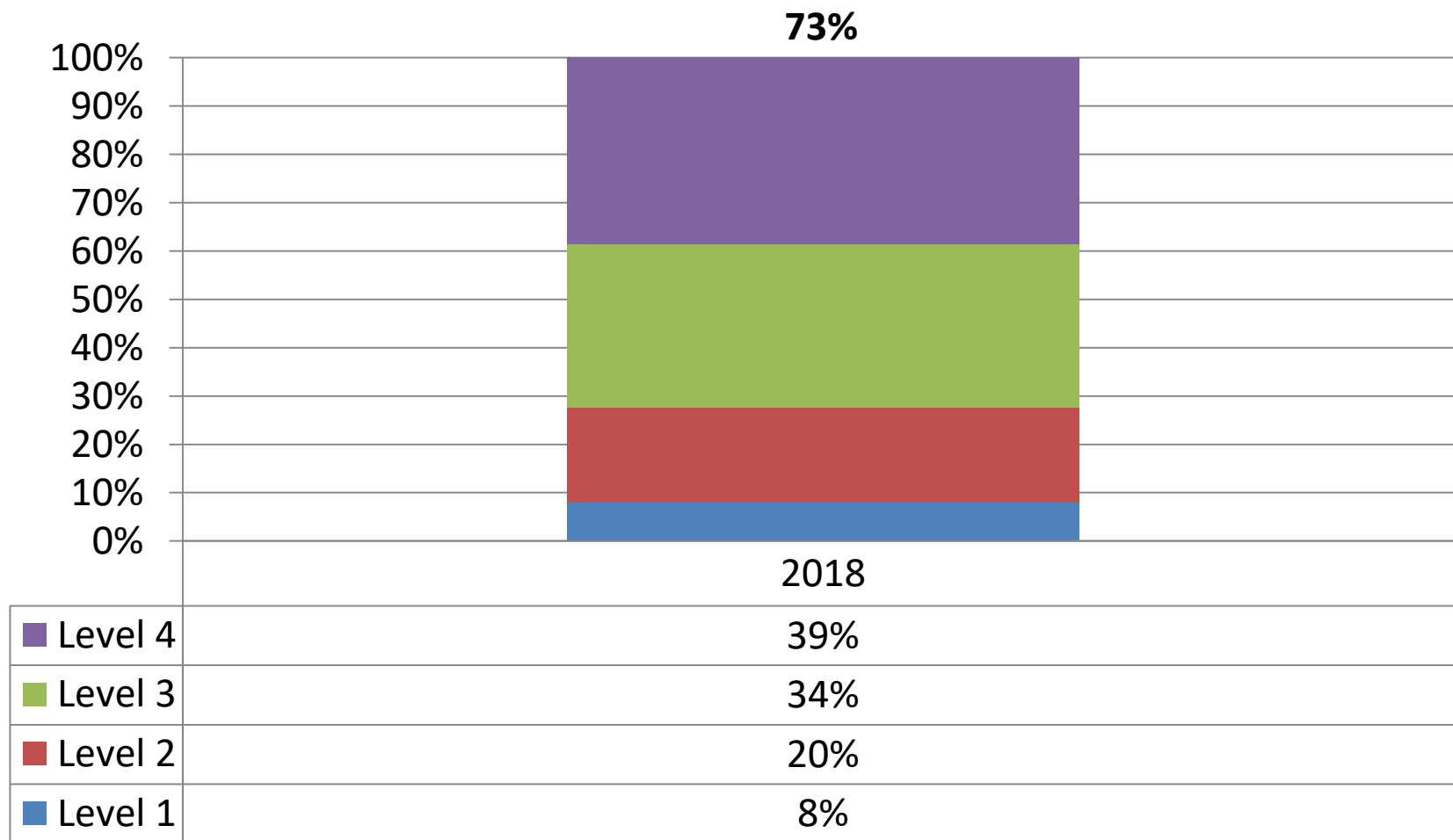
results by subgroup

At or Above Level 3:



2018 NYS Grade 6 Math

At or Above Level 3:



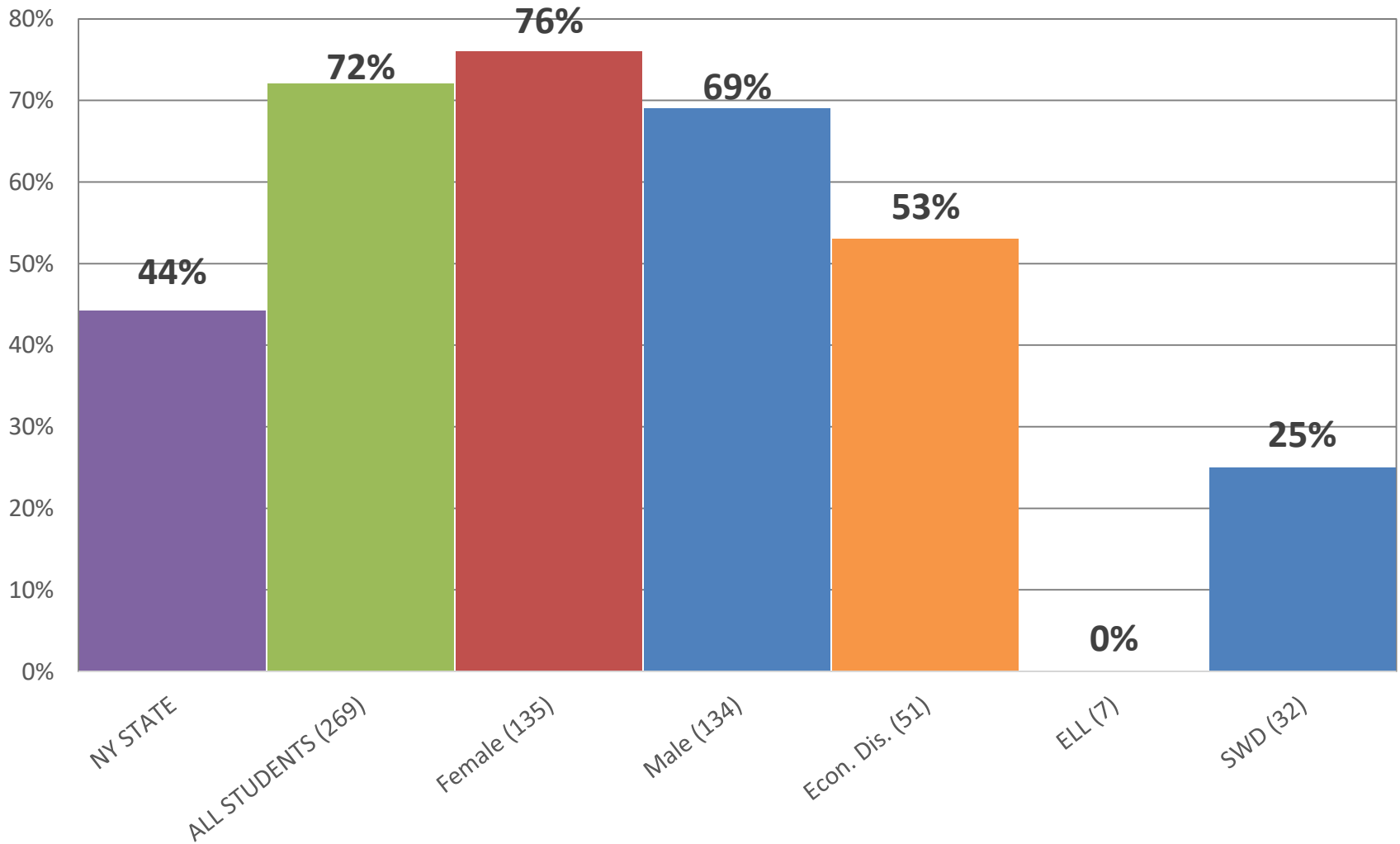
of Students Tested 269

% of Students Tested 81%

2018 NYS Grade 6 Math

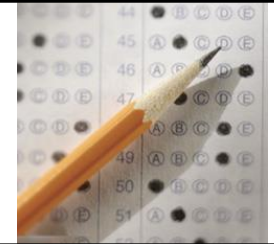
results by subgroup

At or Above Level 3:





New York State Testing Program



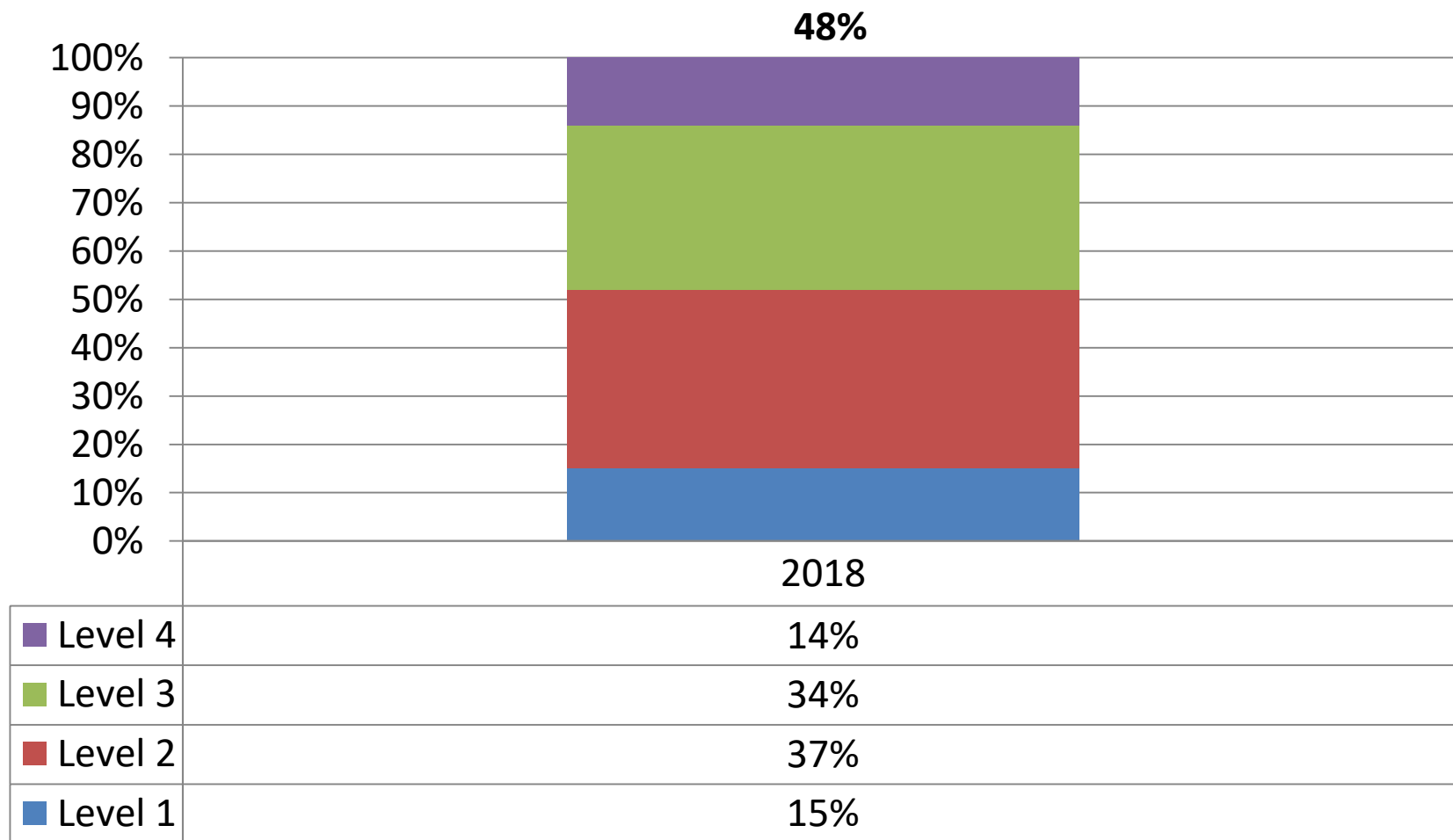
Grades 7-8 Results

April - May 2018



2018 NYS Grade 7 ELA

At or Above Level 3:



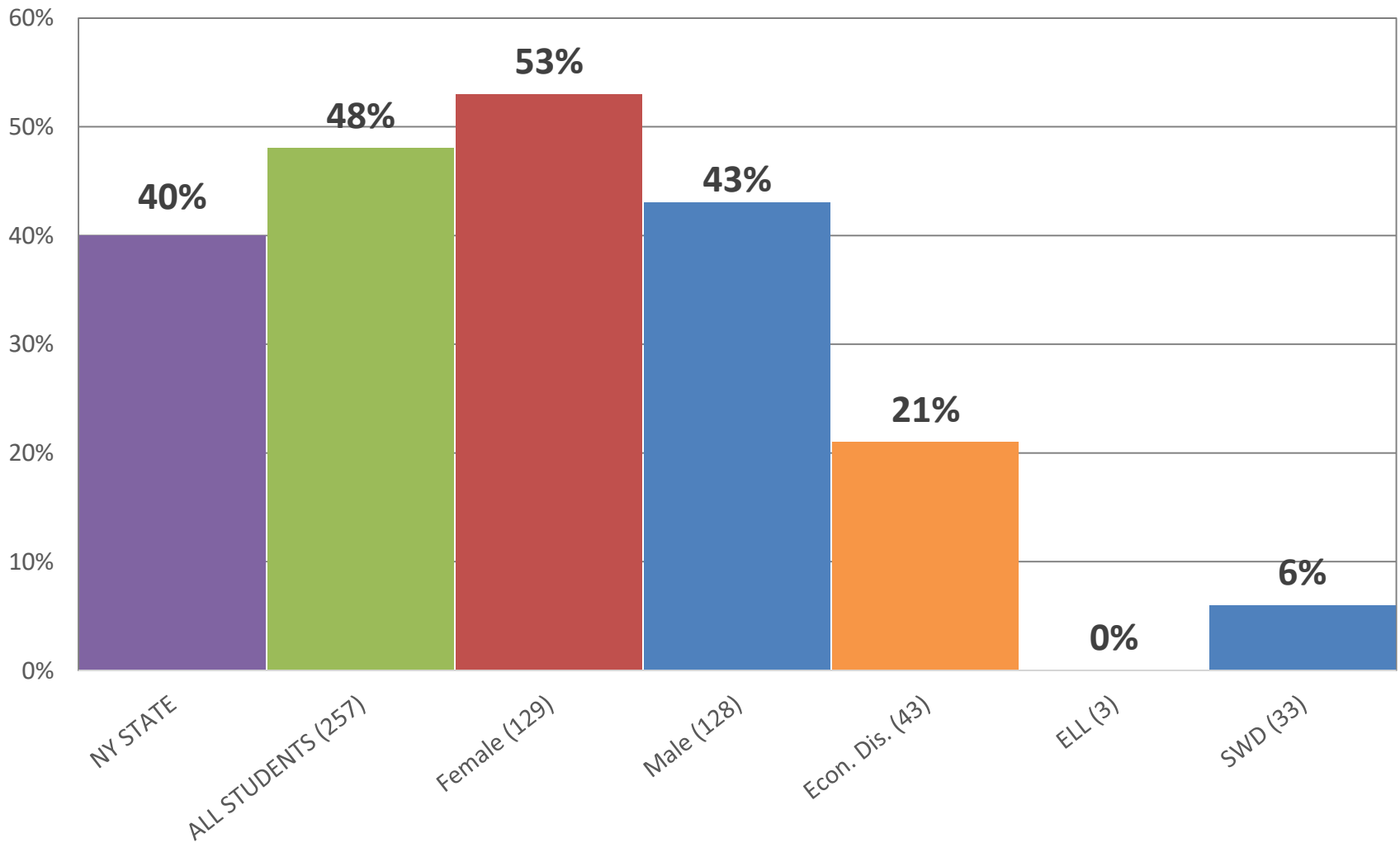
of Students Tested 257

% of Students Tested 73%

2018 NYS Grade 7 ELA

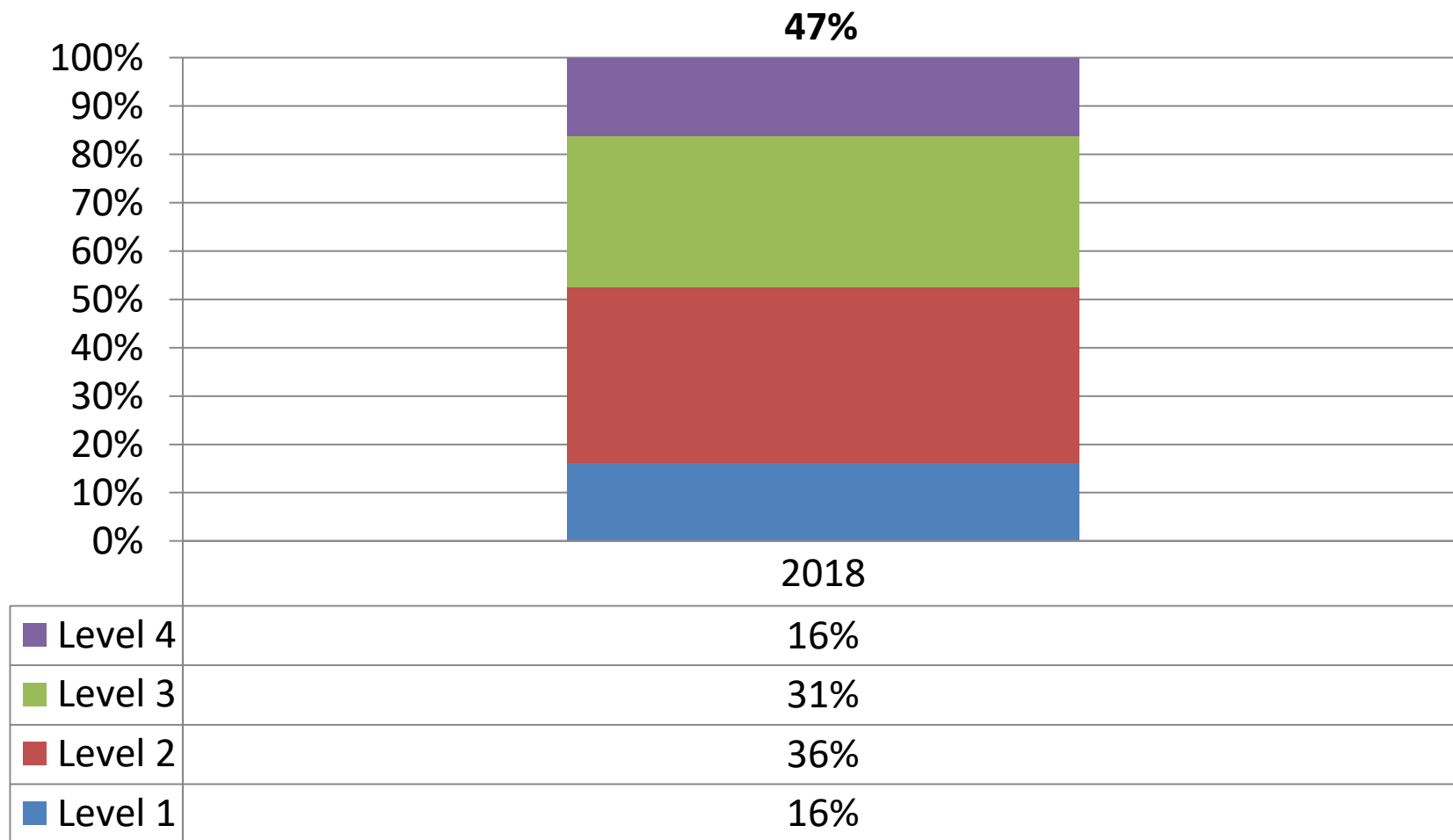
results by subgroup

At or Above Level 3:



2018 NYS Grade 8 ELA

At or Above Level 3:



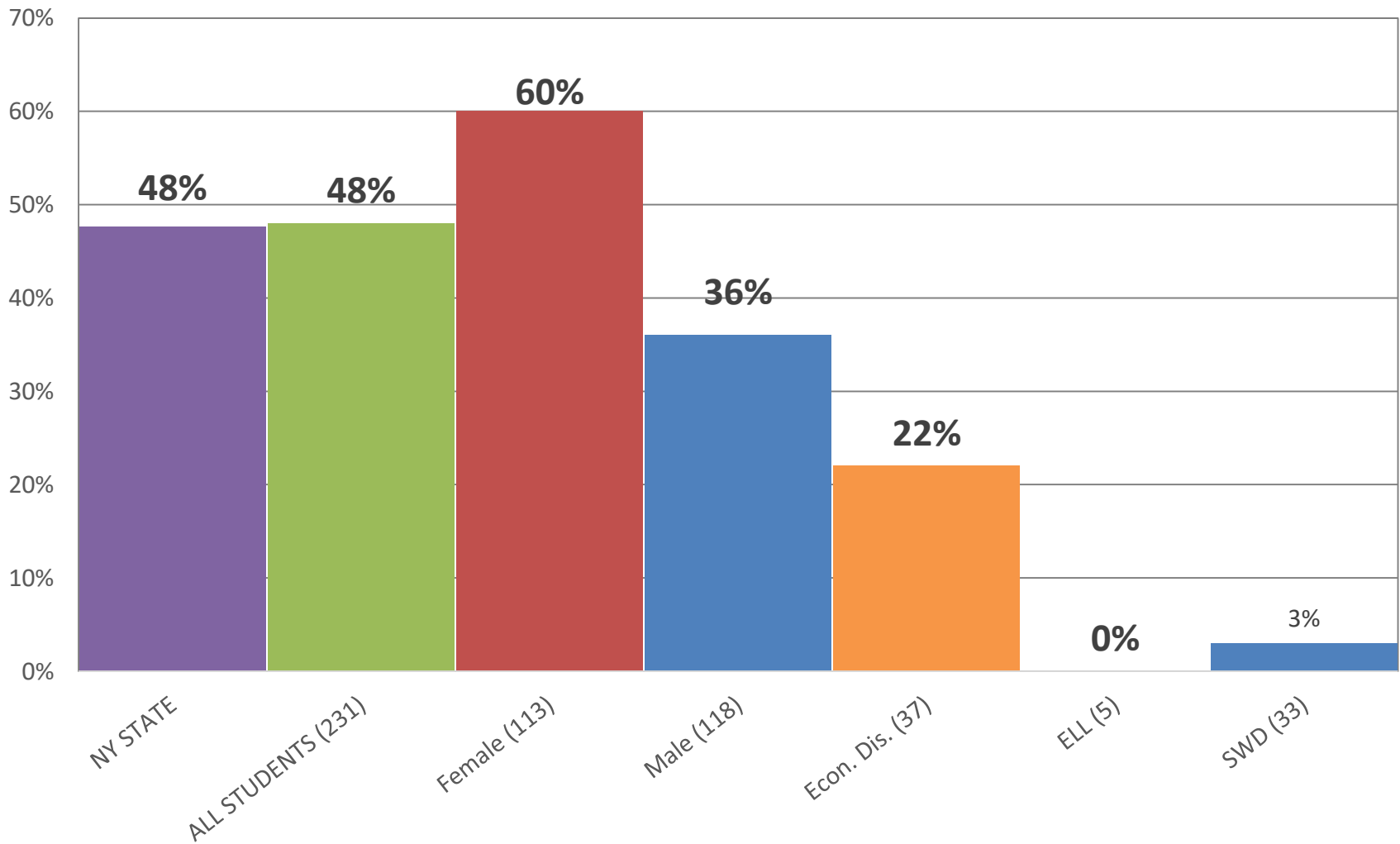
of Students Tested 231

% of Students Tested 65%

2018 NYS Grade 8 ELA

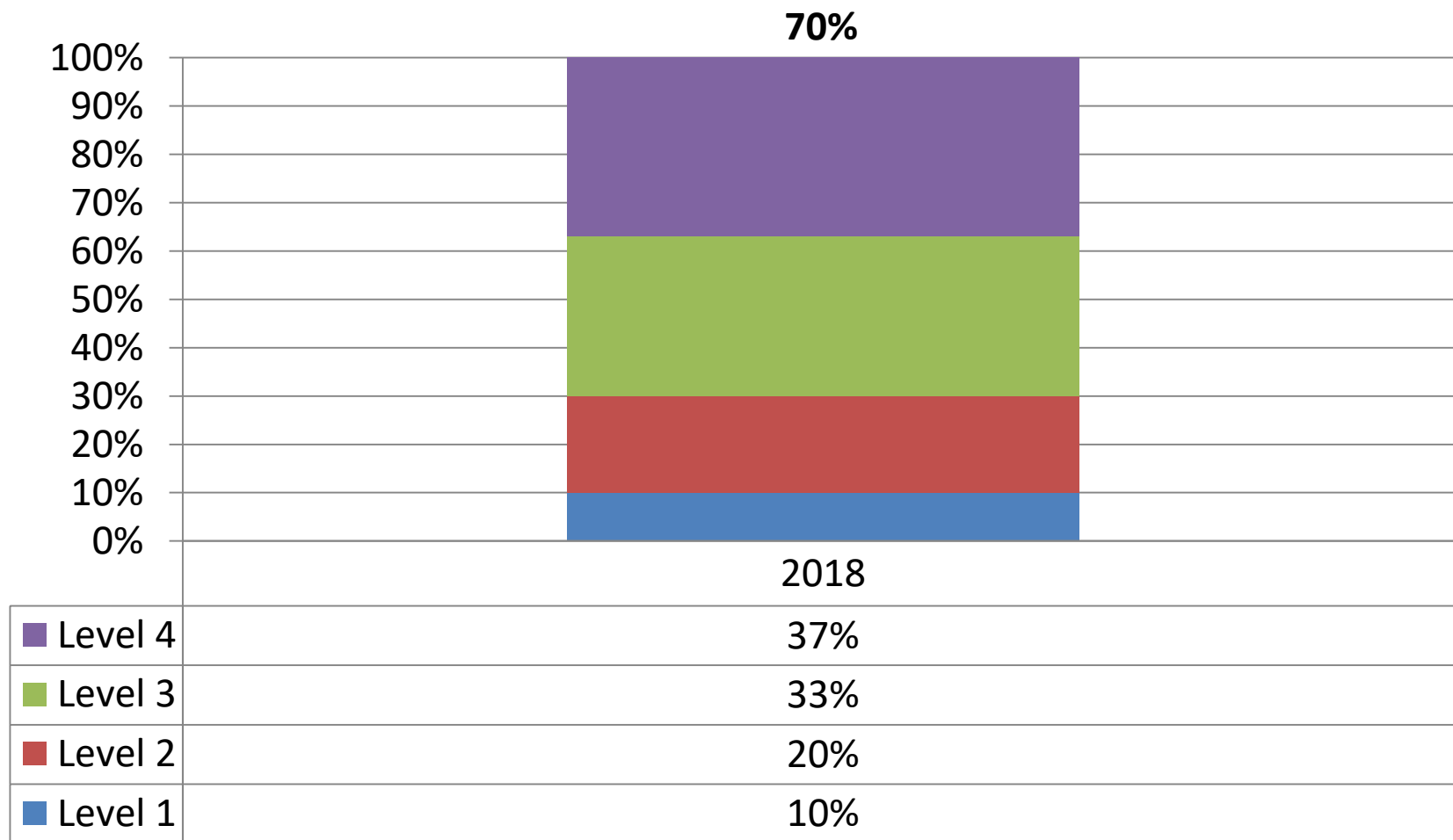
results by subgroup

At or Above Level 3:



2018 NYS Grade 7 Math

At or Above Level 3:



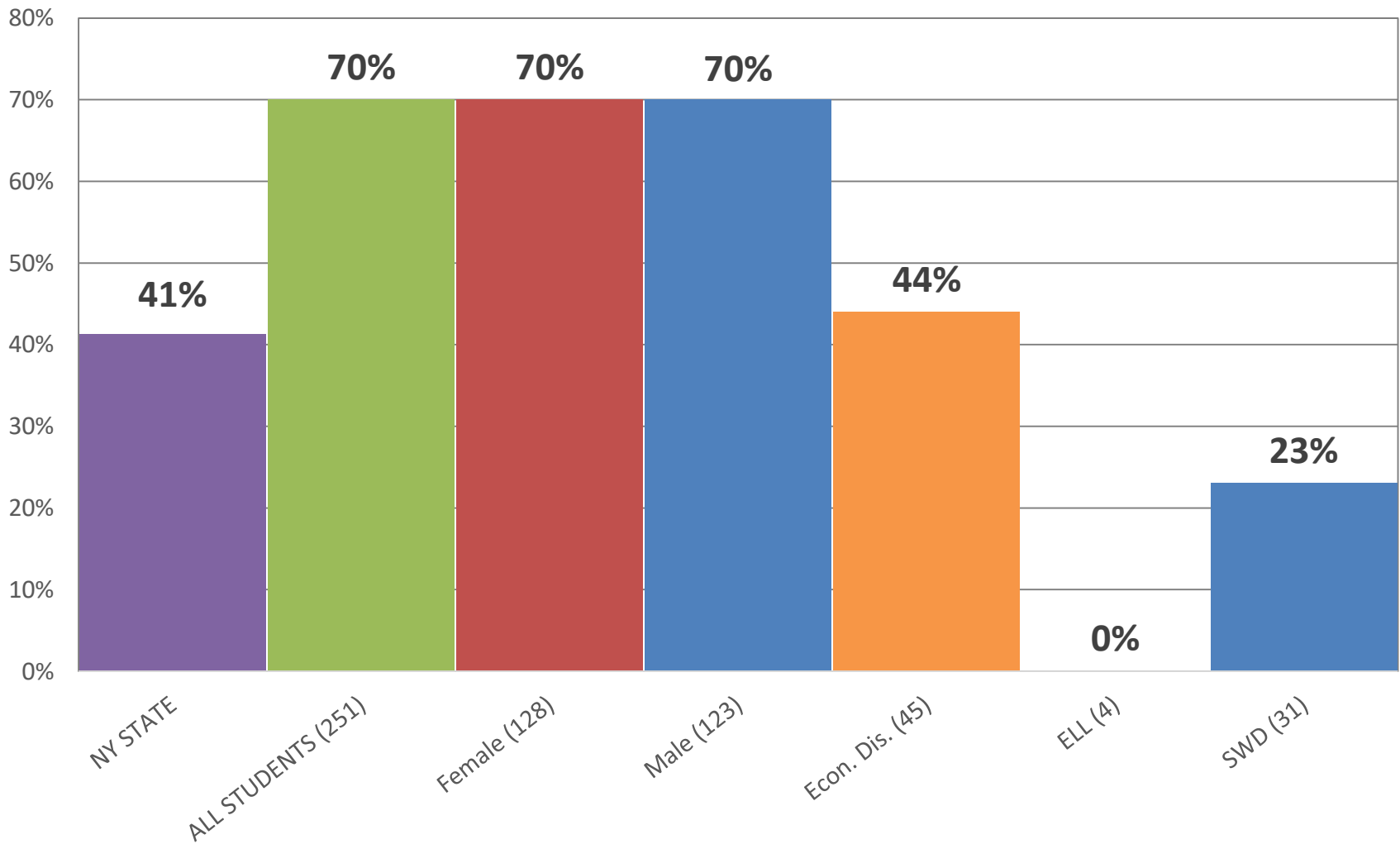
of Students Tested 251

% of Students Tested 71%

2018 NYS Grade 7 Math

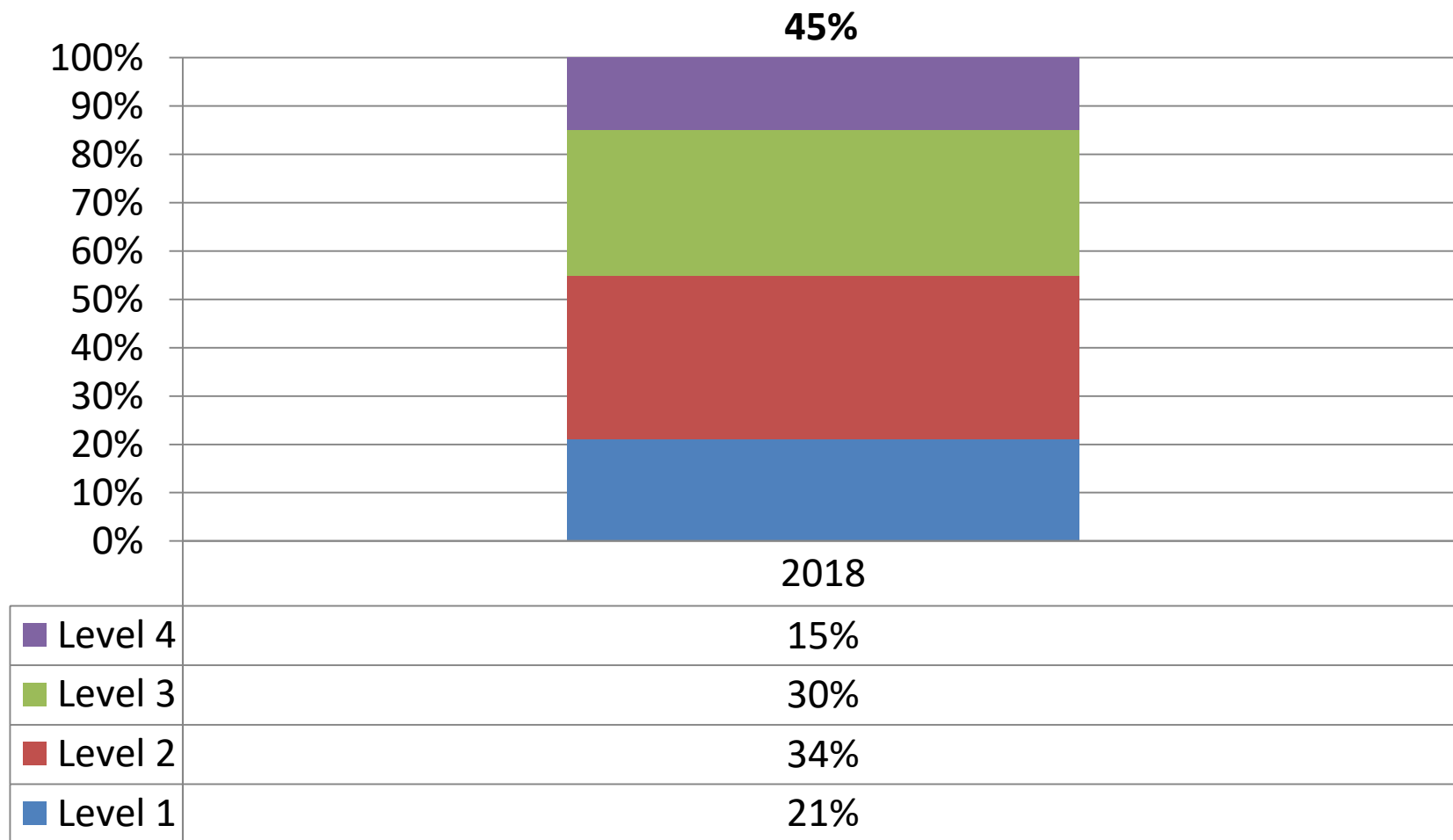
results by subgroup

At or Above Level 3:



2018 NYS Grade 8 Math

At or Above Level 3:



of Students Tested

122

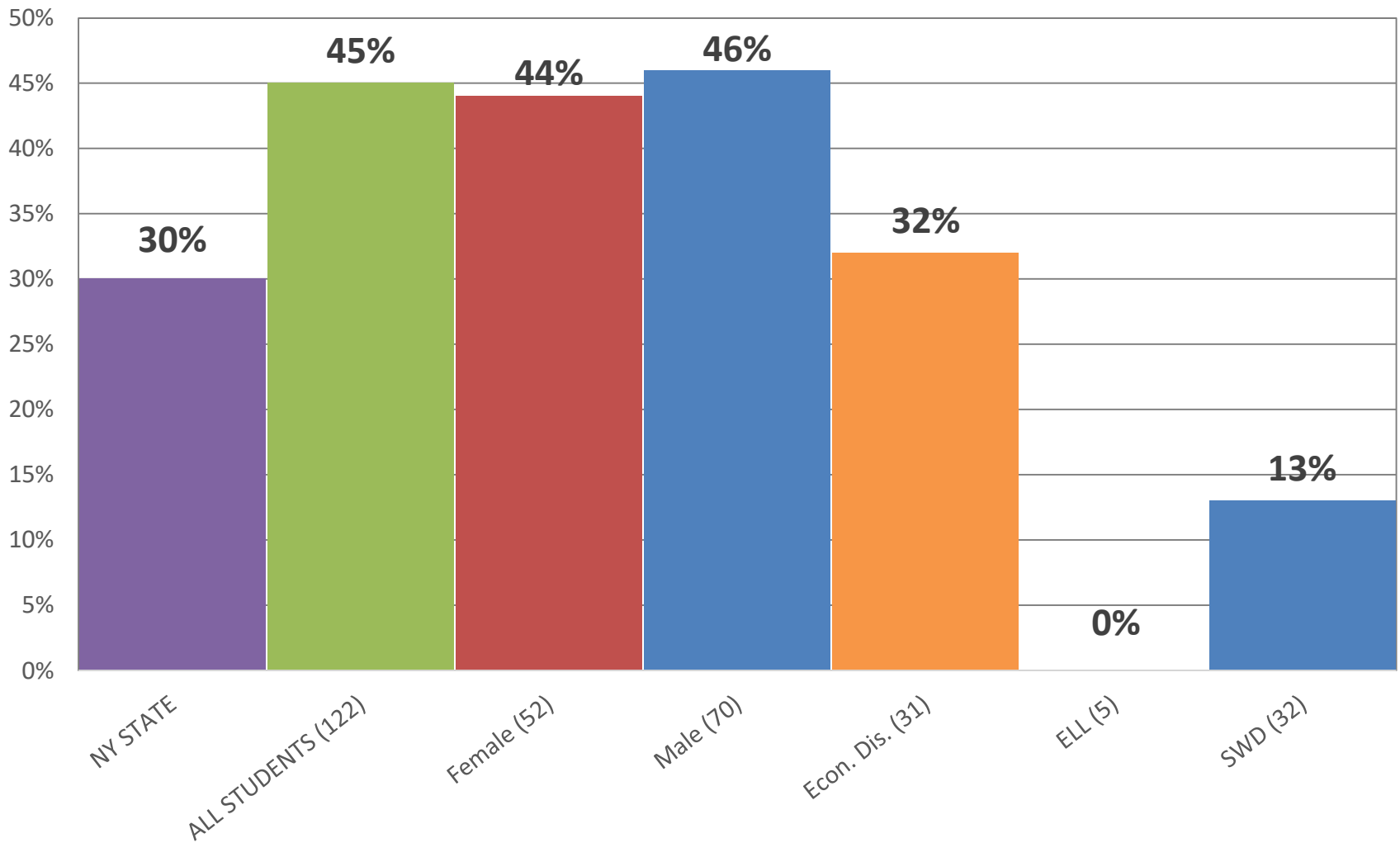
% of Students Tested

34%

2018 NYS Grade 8 Math

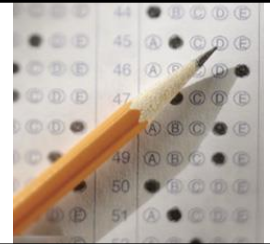
results by subgroup

At or Above Level 3:





New York State Testing Program



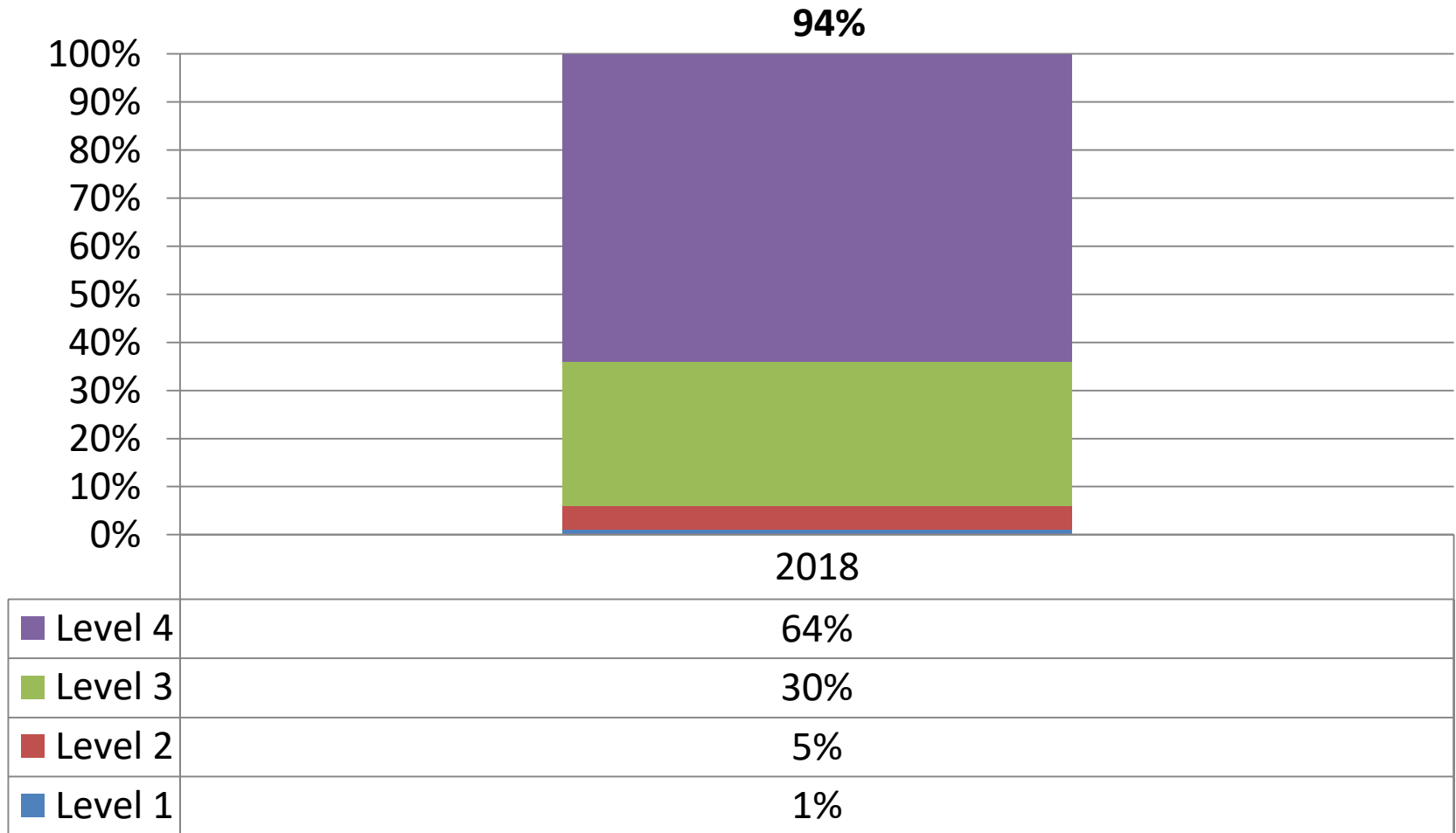
Science Results

April - May 2018



2018 NYS Grade 4 Science

At or Above Level 3:



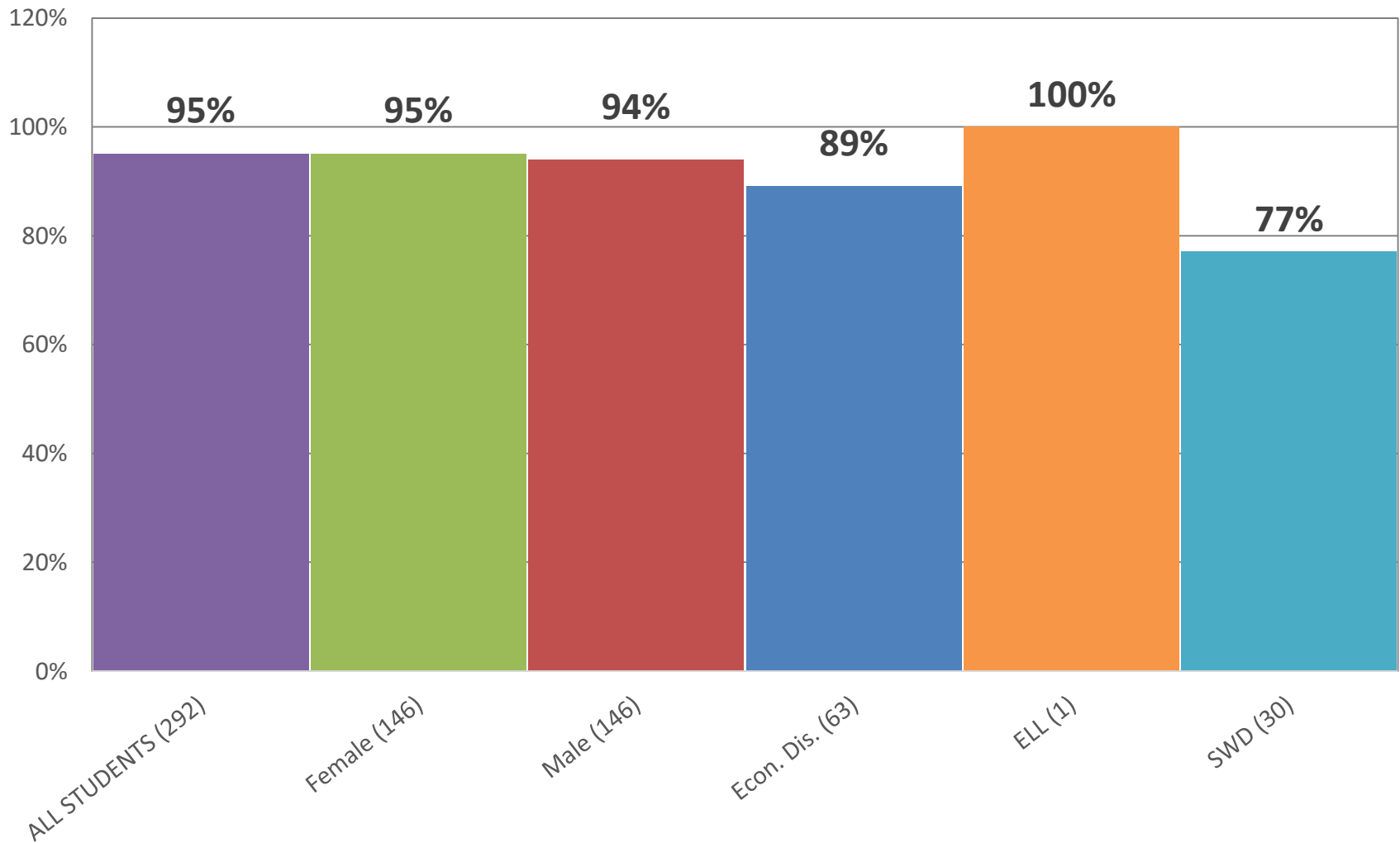
of Students Tested 292

% of Students Tested 89%

2018 NYS Grade 4 Science

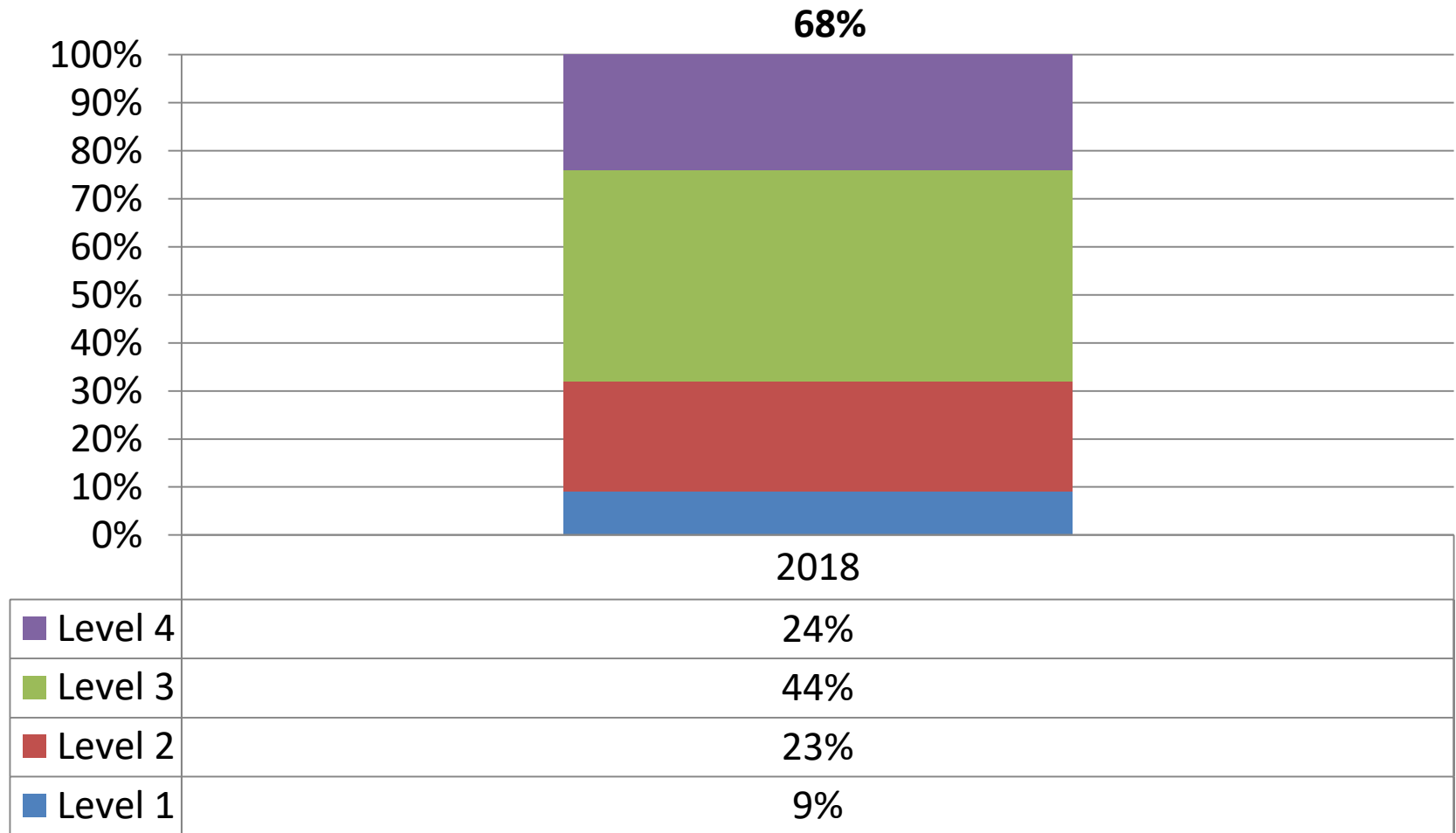
results by subgroup

At or Above Level 3:



2018 NYS Grade 8 Science

At or Above Level 3:



of Students Tested 124

% of Students Tested 35%

2018 NYS Grade 8 Science

results by subgroup

At or Above Level 3:

